

antal

Manual Line Driver

Installation Manual

For Model

240.010

Manual Line Driver



Antal srl unipersonale, Via del Progresso, 10, 35127, Padova, Italy.
Tel. +39 049 8701265. Fax: +39 049 760906. web: www.antal.it

Technical service: antal@antal.it

Installation

240.010

1. About Manual Line Driver

The control system is connected to a traveler on a closed circuit and ensures efficient control and a clean layout.

The system uses a self tailing pulley which operates in **both directions** with a textile gripping system that is efficient **even if the circuit is not under strain** and causes no wear in the rope.

A clutch pin sets the direction in which the traveler moves, or allows for it to be locked in the required position.

The power ratio obtainable with a normal (250 mm) handle is 8 to 1, which is much better than a tackle can offer; moreover, this system has a very limited size and weight.

Applications

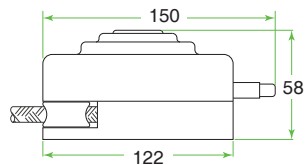
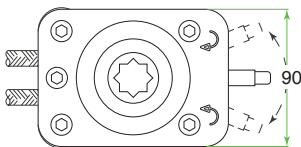
Manual Line Driver allows to transform the rotational movement of the winch handle in a linear movement in both directions.

Manual Line Driver originally born for the nautic market was realized for the adjusting of the mainsail, the genoa or the spinnaker pole car. Today, Manual Line Driver is also used for other purposes outside the nautic market, e.g. tensile structures or awnings.



Since Manual Line Driver uses a self-tailing sheave, it is advisable the use of textiles of at least 10mm diameter

Table of Models



Model	LINE mm	POWER	Weight kg	For Boats Up To (ft)	SWL kg	Screws not included
240.010	10	8:1	0.44	36	2000	3 x 8 mm

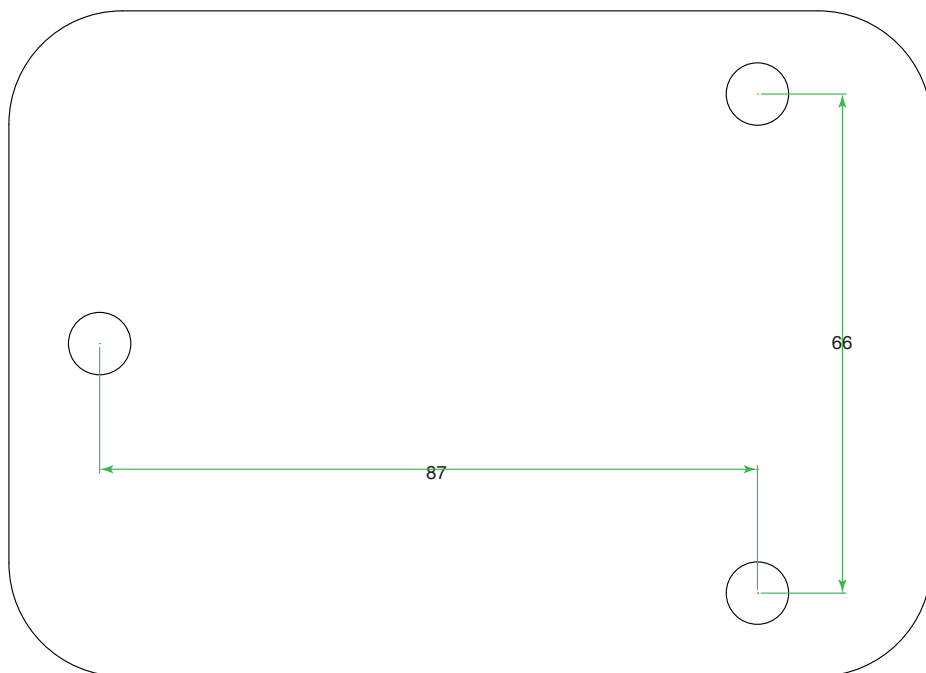
2. Installation

To install Manual Line Driver, you will need: drill, sealant, 3 x Ø8 mm hex socket cap screws (screws not included).

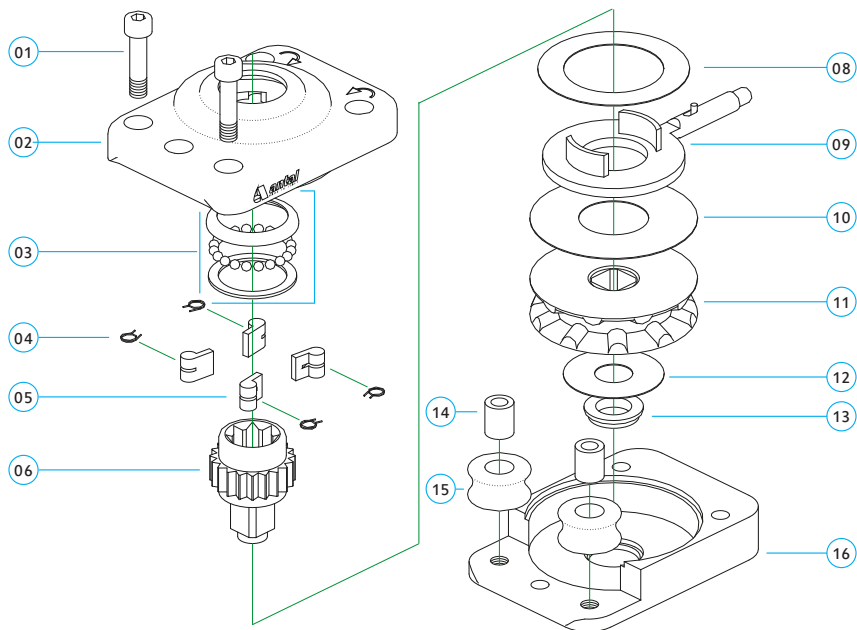
Installation

Refer to the exploded view drawing to identify the parts of Manual Line Driver

- ① Use the base (16) as template to mark the anchoring holes on the deck, alternatively refer to the below real size drilling template. Thus drill the deck.
- ② Cut screws to required length. Use **Loctite 222** or **243** on fasteners' thread to avoid unscrewing. Use **sealant** around all the anchoring holes on the deck under the Manual Line Driver base. Thus tighten all anchoring screws and nuts.
- ③ Insert the line when Manual Line Driver is closed and installed. In case the line is spliced or in case it does not go through, it is necessary to open Manual Line Driver. Refer to the exploded view drawing to proceed to opening Manual Line Driver.



Exploded View



240.010

N°	DESCRIPTION	MATERIAL	Q.TY	N°	DESCRIPTION	MATERIAL	Q.TY
01	SCREW	S.STEEL	2	10	MIDDLE WASHER	FIBRE	1
02	UPPER BOX	ALUMINIUM	1	11	MAIN SHEAVE	ALUMINIUM	1
03	BALL BEARING	(24BALLS+2RINGS)	1	12	LOWER WASHER	FIBRE	1
04	PAWL SPRING	S.STEEL	4	13	LOWER BUSH	STEEL	1
05	PAWL	BRONZE	4	14	ROLLER BUSH	S.STEEL	2
06	MAIN SHAFT	S.STEEL	1	15	ROLLER	PLASTIC	2
08	UPPER WASHER	FIBRE	1	16	LOWER BOX	ALUMINIUM	1
09	CONTROL LEVER		1				