

Through-hull outlets

SCARICHI A MARE

SCARICHI A MARE

SCARICHI A MARE

SCARICHI A MARE

SCARICHI A MARE

SCARICHI A MARE

SCARICHI A MARE

Scarichi a mare

SCARICHI A MARE

SCARICHI A MARE

THROUGH-HULL OUTLETS

SCARICHI A MARE

THROUGH-HULL OUTLETS

THROUGH-HULL OUTLETS

SCARICHI A MARE – THROUGH-HULL OUTLETS



Art. 0051

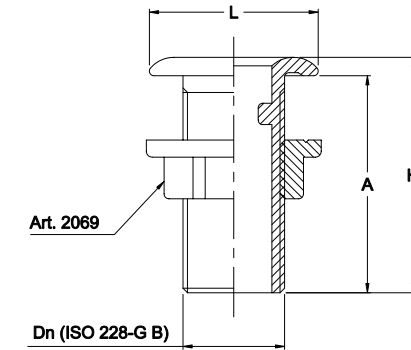
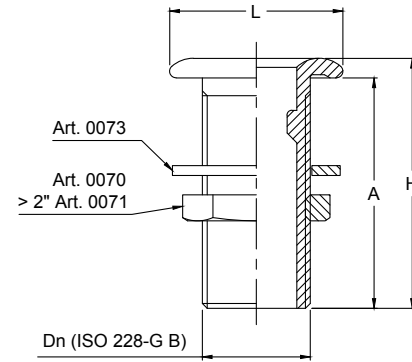
SCARICO A MARE IN OTTONE

BRASS THROUGH HULL OUTLET

OTTONE

BRASS

L	24,5	34	40	49	56	65	72	84	112	124	148
H	55	58	63,5	72	77	83	84,5	102	132	160	209
A	52	53	58	66	71	76,5	78	95	123	151	200
Dn	1/4"	3/8"	1/2"	3/4"	1"	1"1/4	1"1/2	2"	2"1/2	3"	4"



SCARICHI A MARE – THROUGH-HULL OUTLETS



Art. 2051

SCARICO A MARE IN BRONZO

BRONZE THROUGH HULL OUTLET

BRONZO

BRONZE

L	40	49	56	65	72	84	112	124	150	191	225
H	63	71	89	81,5	99,5	100	132	160	209	262	277
A	58	65	83	75	93	93	123	151	200	252	265
Dn	1/2"	3/4"	1"	1"1/4	1"1/2	2"	2"1/2	3"	4"	5"	6"



Art. 7051

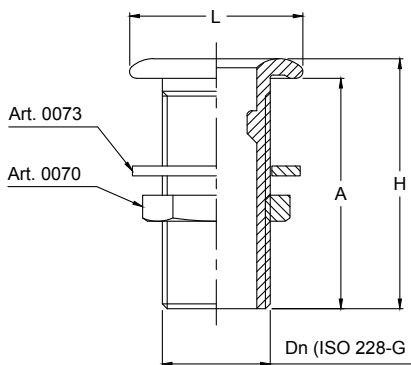
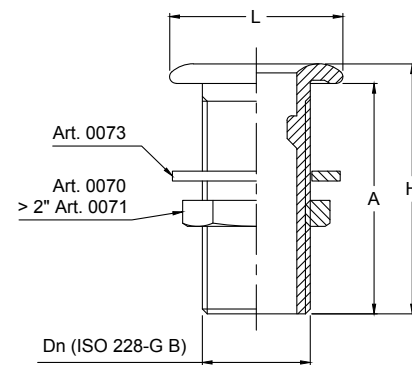
SCARICO A MARE IN OTTONE ANTICORROSIONE

CORROSION-RESISTANT BRASS THROUGH HULL OUTLET

OTTONE ANTICORROSIONE

CORROSION-RESISTANT BRASS

L	34	40	49	56	65	72	84	112	124	148
H	58	63,5	72	77	83	84,5	102	132	160	209
A	53	58	66	71	76,5	78	95	123	151	200
Dn	3/8"	1/2"	3/4"	1"	1"1/4	1"1/2	2"	2"1/2	3"	4"



L	24,5	34	40	49	56	65	72	84
H	55	58	63,5	72	77	83	84,5	102
A	52	53	58	66	71	76,5	78	95
Dn	1/4"	3/8"	1/2"	3/4"	1"	1"1/4	1"1/2	2"



Art. C0051

SCARICO A MARE IN OTTONE CROMATO

CHROME PLATED BRASS THROUGH HULL OUTLET

OTTONE CROMATO

CHROME PLATED BRASS

2 D

SCARICHI A MARE – THROUGH-HULL OUTLETS



Art. 0043

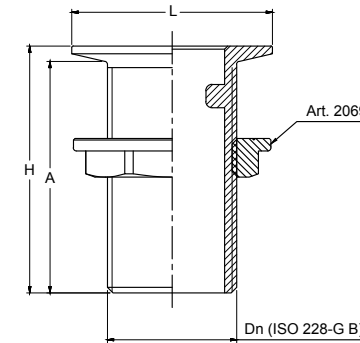
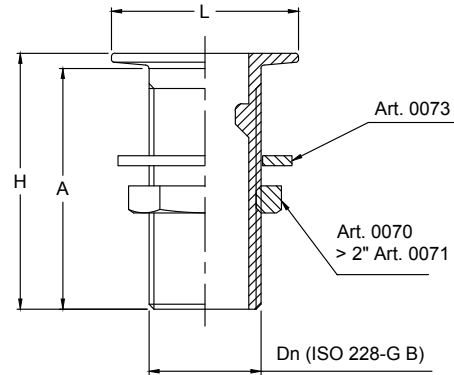
SCARICO A MARE PIATTO IN OTTONE

BRASS THROUGH HULL OUTLET WITH FLAT HEAD

OTTONE

BRASS

L	40	49	56	65	72	84	112
H	62	71	76	81,5	83	100	130,5
A	58	66	71	76,5	78	95	123
Dn	1/2"	3/4"	1"	1"1/4	1"1/2	2"	2"1/2



SCARICHI A MARE – THROUGH-HULL OUTLETS



Art. 2043

SCARICO A MARE PIATTO IN BRONZO

BRONZE THROUGH HULL OUTLET WITH FLAT HEAD

BRONZO

BRONZE

L	40	49	56	65	72	83
H	62	71	88	80	99	100
A	58	66	83	75	94	95
Dn	1/2"	3/4"	1"	1"1/4	1"1/2	2"

2 D



Art. 7043

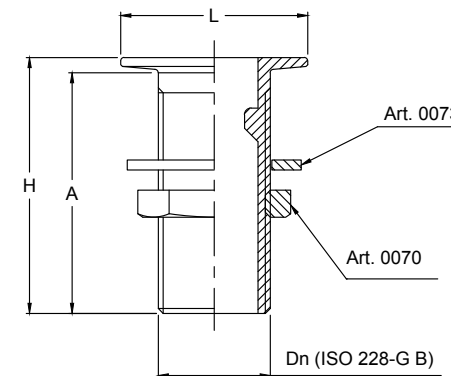
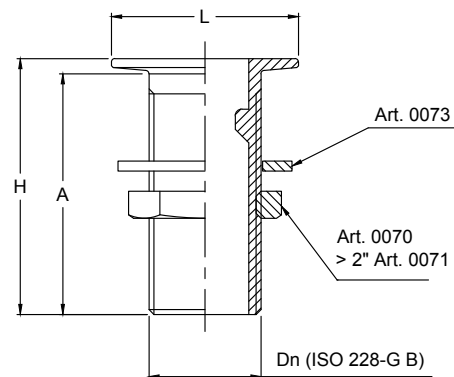
SCARICO A MARE PIATTO IN OTTONE ANTICORROSIONE

CORROSION-RESISTANT BRASS THROUGH HULL OUTLET WITH FLAT HEAD

OTTONE ANTICORROSIONE

CORROSION-RESISTANT BRASS

L	40	49	56	65	72	84	112
H	62	71	76	81,5	83	100	130,5
A	58	66	71	76,5	78	95	123
Dn	1/2"	3/4"	1"	1"1/4	1"1/2	2"	2"1/2



L	72	84
H	83	100
A	78	95
Dn	1"1/2	2"



Art. C0043

SCARICO A MARE PIATTO IN OTTONE CROMATO

CHROME PLATED BRASS THROUGH HULL OUTLET WITH FLAT HEAD

OTTONE CROMATO

CHROME PLATED BRASS

SCARICHI A MARE – THROUGH-HULL OUTLETS



Art. 0052

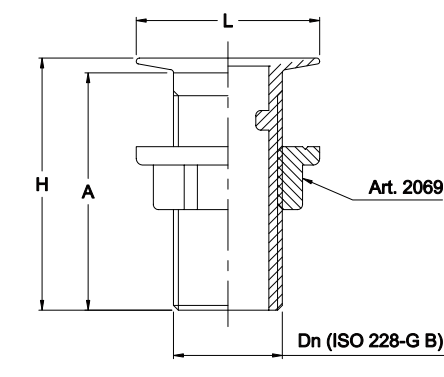
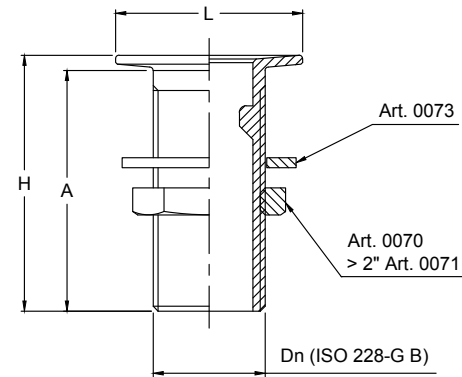
SCARICO A MARE A POZZETTO
IN OTTONE

BRASS THROUGH HULL OUTLET WITH
REVERSE INCLINED HEAD

OTTONE

BRASS

L	24,5	34	40	49	56	65	72	84	112	124	148
H	55	56,5	62	71	76	81,5	83	100	130,5	158,5	207
A	52	53	58	66	71	76,5	78	95	123	151	200
Dn	1/4"	3/8"	1/2"	3/4"	1"	1"1/4	1"1/2	2"	2"1/2	3"	4"



SCARICHI A MARE – THROUGH-HULL OUTLETS



Art. 2052

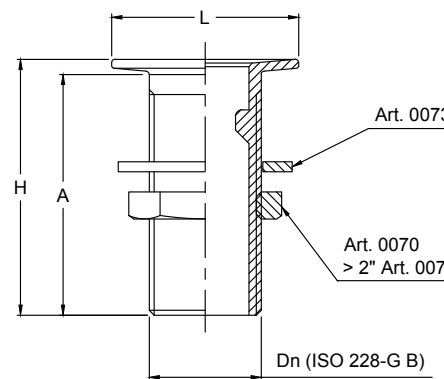
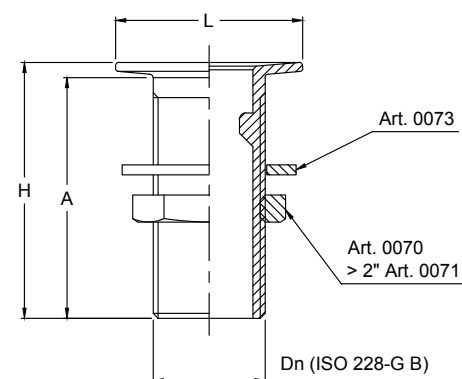
SCARICO A MARE A POZZETTO
IN BRONZO

BRONZE THROUGH HULL OUTLET WITH
REVERSE INCLINED HEAD

BRONZO

BRONZE

L	40	49	56	65	72	84	112	124	150	190
H	62	71	89	81,5	99,5	100	130,5	158,5	210	262
A	58	66	84	76,5	94	95	123	151	202	251
Dn	1/2"	3/4"	1"	1"1/4	1"1/2	2"	2"1/2	3"	4"	5"



L	24,5	34	40	49	56	65	72	84	112
H	55	56,5	62	71	76	81,5	83	100	130,5
A	52	53	58	66	71	76,5	78	95	123
Dn	1/4"	3/8"	1/2"	3/4"	1"	1"1/4	1"1/2	2"	2"1/2



Art. 7052

SCARICO A MARE A POZZETTO
IN OTTONE ANTICORROSIONE

CORROSION-RESISTANT BRASS THROUGH
HULL OUTLET WITH REVERSE INCLINED HEAD

OTTONE ANTICORROSIONE

CORROSION-RESISTANT BRASS



Art. C0052

SCARICO A MARE A POZZETTO
IN OTTONE CROMATO

CHROME PLATED BRASS THROUGH HULL
OUTLET WITH REVERSE INCLINED HEAD

OTTONE CROMATO

CHROME PLATED BRASS

2 D

SCARICHI A MARE – THROUGH-HULL OUTLETS



Art. 0053

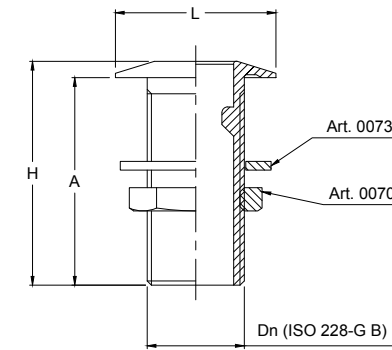
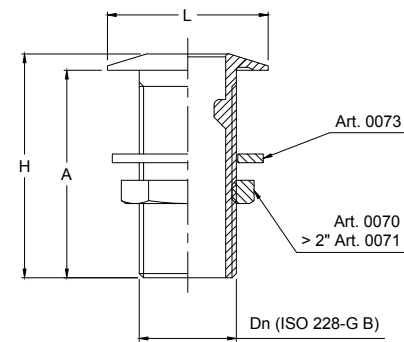
SCARICO A MARE INCLINATO
IN OTTONE

BRASS THROUGH HULL OUTLET
WITH INCLINED HEAD

OTTONE

BRASS

L	24,5	34	40	49	56	65	72	84	112	124	148
H	55	58	63,5	72	77	83	84,5	102	132	160	209
A	52	53	58	66	71	76,5	78	95	123	151	200
Dn	1/4"	3/8"	1/2"	3/4"	1"	1"1/4	1"1/2	2"	2"1/2	3"	4"



SCARICHI A MARE – THROUGH-HULL OUTLETS



Art. C0053

SCARICO A MARE INCLINATO
IN OTTONE CROMATO

CHROME PLATED BRASS THROUGH HULL
OUTLET WITH INCLINED HEAD

OTTONE CROMATO

CHROME PLATED BRASS

L	24,5	34	40	49	56	65	72	84
H	55	58	63,5	72	77	83	84,5	102
A	52	53	58	66	71	76,5	78	95
Dn	1/4"	3/8"	1/2"	3/4"	1"	1"1/4	1"1/2	2"

2D



Art. 7053

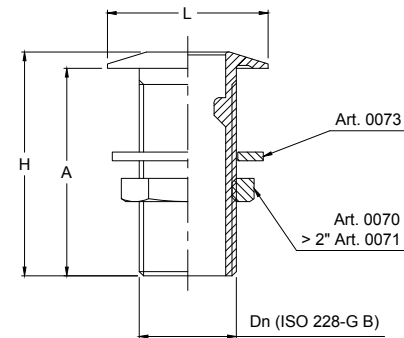
SCARICO A MARE INCLINATO
IN OTTONE ANTICORROSIONE

CORROSION-RESISTANT BRASS THROU-
GH HULL OUTLET WITH INCLINED HEAD

OTTONE ANTICORROSIONE

CORROSION-RESISTANT BRASS

L	34	40	49	56	65	72	84	112	124	148
H	58	63,5	72	77	83	84,5	102	132	160	209
A	53	58	66	71	76,5	78	95	123	151	200
Dn	3/8"	1/2"	3/4"	1"	1"1/4	1"1/2	2"	2"1/2	3"	4"



SCARICHI A MARE – THROUGH-HULL OUTLETS



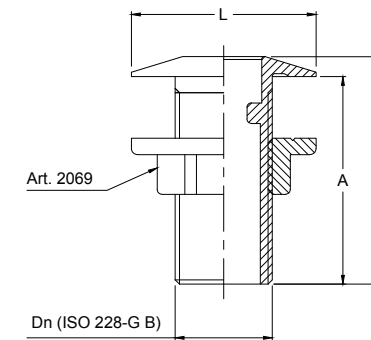
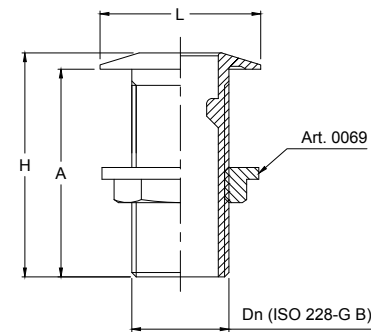
Art. 0057

SCARICO A MARE INCLINATO IN OTTONE
CON DADO FLANGIATO PESANTE
BRASS THROUGH HULL OUTLET WITH
INCLINED HEAD AND FLANGED NUT

OTTONE

BRASS

L	24,5	34	40	49	56	65	72	84
H	55	58	63,5	72	77	83	84,5	102
A	52	53	58	66	71	76,5	78	95
Dn	1/4"	3/8"	1/2"	3/4"	1"	1"1/4	1"1/2	2"



SCARICHI A MARE – THROUGH-HULL OUTLETS



Art. 2057

SCARICO A MARE INCLINATO IN BRONZO CON
DADO FLANGIATO IN BRONZO
BRONZE THROUGH HULL OUTLET WITH
INCLINED HEAD AND BRONZE FLANGED NUT

BRONZO

BRONZE

L	40	49	56	65	72	84	112	124	148	190	225	275
H	64	72,5	89,5	81,5	100	102,5	132,5	160	209,5	262,5	277,5	310,5
A	58	66	83	75	93	95	123	150,5	200	252	265	298
Dn	1/2"	3/4"	1"	1"1/4	1"1/2	2"	2"1/2	3"	4"	5"	6"	M216 x3.5

2 D



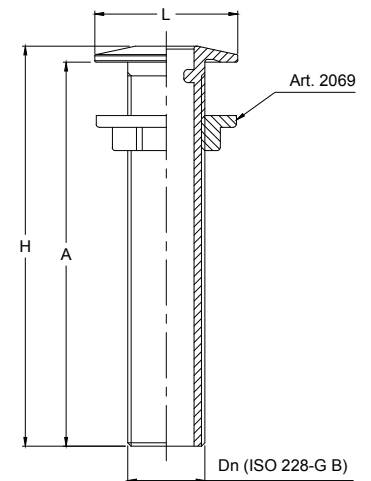
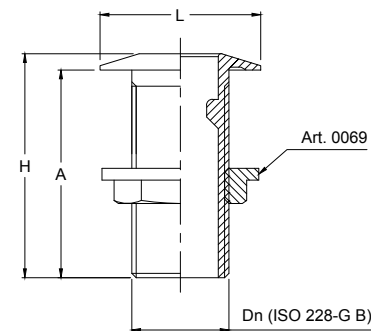
Art. 7057

SCARICO A MARE INCLINATO IN OTTONE
ANTICORROSIONE CON DADO FLANGIATO PESANTE
CORROSION-RESISTANT BRASS THROUGH HULL
OUTLET WITH INCLINED HEAD AND FLANGED NUT

OTTONE ANTICORROSIONE

CORROSION-RESISTANT BRASS

L	34	40	49	56	65	72	84
H	58	63,5	72	77	83	84,5	102
A	53	58	66	71	76,5	78	95
Dn	3/8"	1/2"	3/4"	1"	1"1/4	1"1/2	2"



L	65	75	85	100	120	130
H	196,5	197	197,5	198,5	240	240
A	190	190	190	190	230,5	230,5
Dn	1"	1"1/4	1"1/2	2"	2"1/2	3"



Art. 2657

SCARICO A MARE INCLINATO XL IN BRONZO
CON DADO FLANGIATO IN BRONZO
BRONZE XL THROUGH HULL OUTLET WITH
INCLINED HEAD AND BRONZE FLANGED NUT

BRONZO

BRONZE



Art. 0058

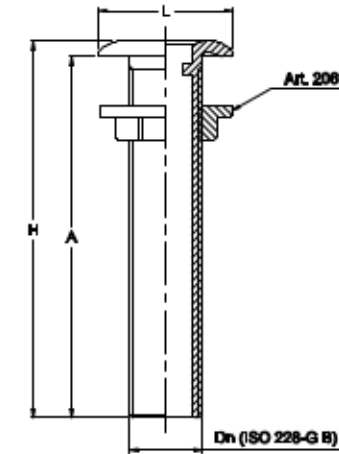
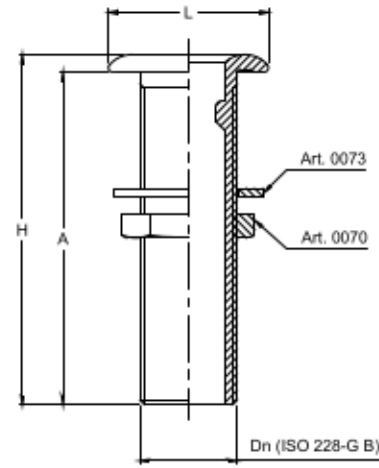
SCARICO A MARE 100 mm IN OTTONE

100 mm BRASS THROUGH HULL OUTLET

OTTONE

BRASS

L	40	49	56	65	72
H	100	106	100	100	100
A	94,5	100	94	93,5	93,5
Dn	1/2"	3/4"	1"	1 1/4"	1 1/2"



Art. 2058

SCARICO A MARE LUNGO IN BRONZO
CON DADO FLANGIATO IN BRONZO
BRONZE LONG THROUGH HULL OUTLET
WITH BRONZE FLANGED NUT

BRONZO

BRONZE

2 D

L	49	56	65	72
H	120	120	120	120
A	114	114	113,5	113,5
Dn	3/4"	1"	1 1/4"	1 1/2"



Art. 7058

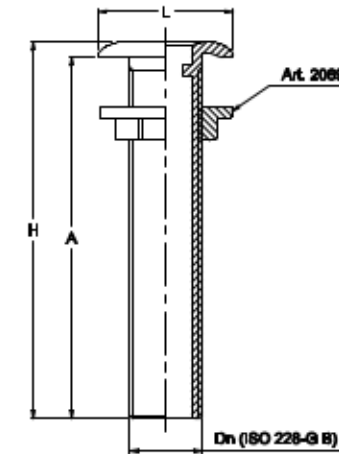
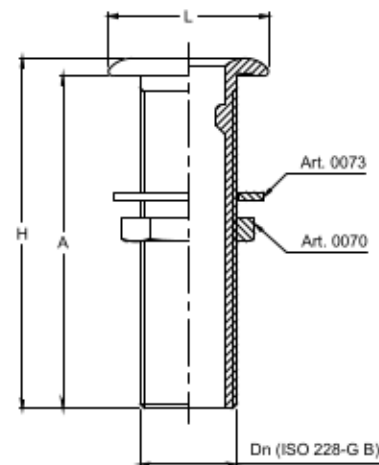
SCARICO A MARE 100 mm IN OTTONE
ANTICORROSIONE

100 mm CORROSION-RESISTANT BRASS
THROUGH HULL OUTLET

OTTONE ANTICORROSIONE

CORROSION-RESISTANT BRASS

L	40	49	56	65	72
H	100	106	100	100	100
A	94,5	100	94	93,5	93,5
Dn	1/2"	3/4"	1"	1 1/4"	1 1/2"



L	65	75	85	100	120	180
H	240	240	240	240	240	240
A	234	234	233	233	231	231
Dn	1"	1 1/4"	1 1/2"	2"	2 1/2"	3"



Art. 2658

SCARICO A MARE XL IN BRONZO CON
DADO FLANGIATO IN BRONZO
BRONZE XL THROUGH HULL OUTLET
WITH BRONZE FLANGED NUT

BRONZO

BRONZE

SCARICHI A MARE – THROUGH-HULL OUTLETS



Art. 0054

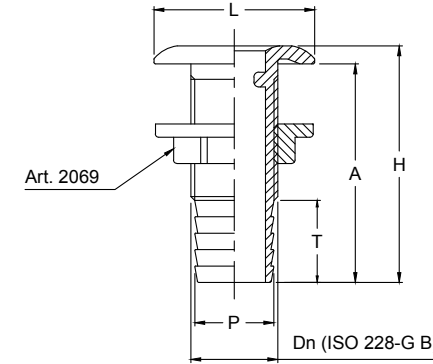
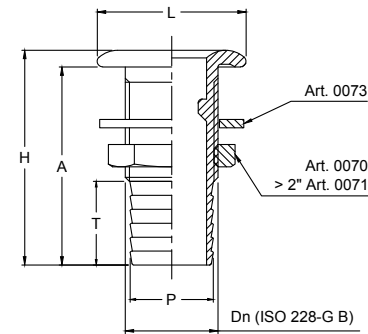
SCARICO A MARE CON PORTAGOMMA
IN OTTONE

BRASS THROUGH HULL OUTLET
WITH HOSE TAIL

OTTONE

BRASS

L	20	24,5	34	40	49	56	65	72	84	112	124	148
H	50	55	58	63,5	72	77	83	84,5	102	132	160	209
A	47	52	53	58	66	71	76,5	78	95	123	151	200
P	8,5	11,2	15	18,5	24	30	38,5	44	56	71,5	84,5	109
T	20	22,5	22,5	25	25	30	30	30	42	48	60	66
Dn	1/8"	1/4"	3/8"	1/2"	3/4"	1"	1"1/4	1"1/2	2"	2"1/2	3"	4"



P	18,5	24	30	38,5	44	56	71,5	84,5	109	135
L	40	49	56	65	72	84	112	124	150	190
H	63	71	89	81,5	99,5	100	132	160	209	262
A	58	65	83	75	93	93	123	151	200	252
T	25	25	30	30	30	42	48	60	60	60
Dn	1/2"	3/4"	1"	1"1/4	1"1/2	2"	2"1/2	3"	4"	5"



Art. 2054

SCARICO A MARE CON PORTAGOMMA
IN BRONZO

BRONZE THROUGH HULL OUTLET WITH
HOSE TAIL

BRONZO

BRONZE

2D



Art. 7054

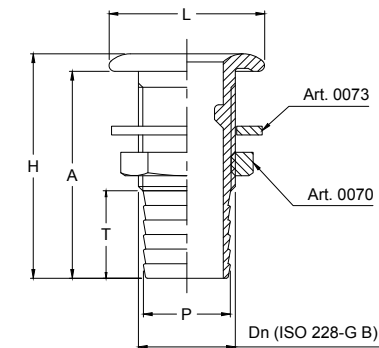
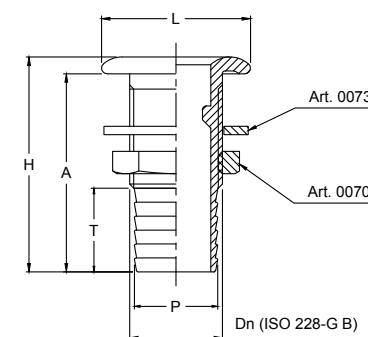
SCARICO A MARE CON PORTAGOMMA
IN OTTONE ANTICORROSIONE

CORROSION-RESISTANT BRASS THROUGH
HULL OUTLET WITH HOSE TAIL

OTTONE ANTICORROSIONE

CORROSION-RESISTANT BRASS

L	34	40	49	56	65	72	84
H	58	63,5	72	77	83	84,5	102
A	53	58	66	71	76,5	78	95
P	15	18,5	24	30	38,5	44	56
T	22,5	25	25	30	30	30	42
Dn	3/8"	1/2"	3/4"	1"	1"1/4	1"1/2	2"



L	20	24,5	34	40	49	56	65	72	84
H	50	55	58	63,5	72	77	83	84,5	102
A	47	52	53	58	66	71	76,5	78	95
P	8,5	11,2	15	18,5	24	30	38,5	44	56
T	20	22,5	22,5	25	25	30	30	30	42
Dn	1/8"	1/4"	3/8"	1/2"	3/4"	1"	1"1/4	1"1/2	2"



Art. C0054

SCARICO A MARE CON PORTAGOMMA
IN OTTONE CROMATO

CHROME PLATED BRASS THROUGH HULL
OUTLET WITH HOSE TAIL

OTTONE CROMATO

CHROME PLATED BRASS

SCARICHI A MARE – THROUGH-HULL OUTLETS



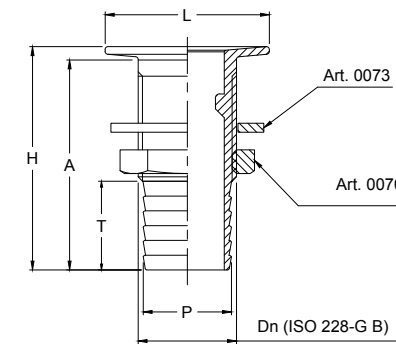
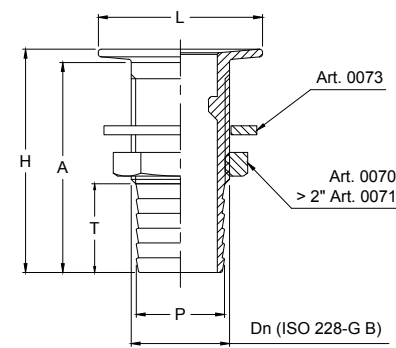
Art. 0059

SCARICO A MARE A POZZETTO CON PORTAGOMMA IN OTTONE
BRASS THROUGH HULL OUTLET WITH REVERSE INCLINED HEAD AND HOSE TAIL

OTTONE

BRASS

P	11	15	18,5	24	30	38,5	44	56	71,5	84,5	109
H	55	56,5	62	71	76	81,5	83,5	100	130,5	158,5	207
L	24,5	34	40	49	56	65	72	84	112	124	148
A	52	53	58	66	71	76,5	78	95	123	151	200
T	22,5	22,5	25	25	30	30	30	42	48	60	66
Dn	1/4"	3/8"	1/2"	3/4"	1"	1"1/4	1"1/2	2"	2"1/2	3"	4"



SCARICHI A MARE – THROUGH-HULL OUTLETS



Art. C0059

SCARICO A MARE A POZZETTO CON PORTAGOMMA IN OTTONE CROMATO
CHROME PLATED BRASS THROUGH HULL OUTLET WITH REVERSE INCLINED HEAD AND HOSE TAIL

OTTONE CROMATO

CHROME PLATED BRASS

P	11	15	18,5	24	30	38,5	44	56
H	55	56,5	62	71	76	81,5	83,5	100
L	24,5	34	40	49	56	65	72	84
A	52	53	58	66	71	76,5	78	95
T	22,5	22,5	25	25	30	30	30	42
Dn	1/4"	3/8"	1/2"	3/4"	1"	1"1/4	1"1/2	2"



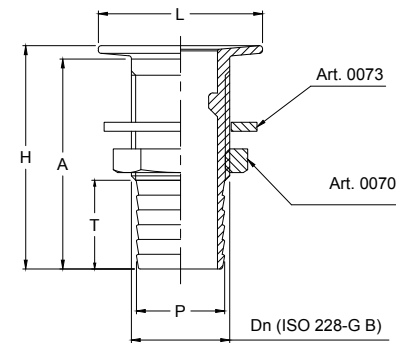
Art. 7059

SCARICO A MARE A POZZETTO CON PORTAGOMMA IN OTTONE ANTICORROSIONE
CORROSION-RESISTANT BRASS THROUGH HULL OUTLET WITH REVERSE INCLINED HEAD AND HOSE TAIL

OTTONE ANTICORROSIONE

CORROSION-RESISTANT BRASS

P	11	15	18,5	24	30	38,5	44	56
H	55	56,5	62	71	76	81,5	83,5	100
L	24,5	34	40	49	56	65	72	84
A	52	53	58	66	71	76,5	78	95
T	22,5	22,5	25	25	30	30	30	42
Dn	1/4"	3/8"	1/2"	3/4"	1"	1"1/4	1"1/2	2"



2D

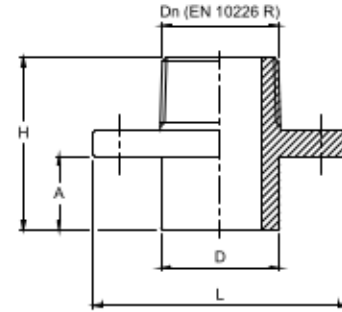


Art. 7039

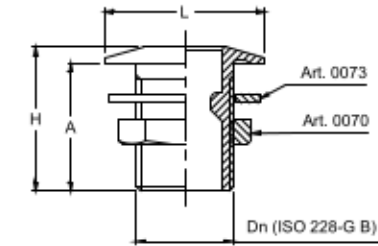
PASSASCAFO IN OTTONE
ANTICORROSIONE 10/16/26 mm
CORROSION-RESISTANT BRASS
THROUGH HULL OUTLET 10/16/26 mm

OTTONE ANTICORROSIONE
CORROSION-RESISTANT BRASS

L	90	90	90	90	90	90	90	90	120	120
D	26	26	33	33	42	42	48	48	60	60
H	45	51	45	51	45	51	45	51	60	70
A	10	16	10	16	10	16	10	16	16	26
Dn	3/4"	1"	1 1/4"	1 1/2"	2"					



L	40	49	56	65	72	84
H	61,5	62	62	62,5	62,5	63
A	56	56	56	56	56	56
Dn	1/2"	3/4"	1"	1 1/4"	1 1/2"	2"



Art. 0042

SCARICO A MARE 56 mm IN OTTONE
56 mm BRASS THROUGH HULL OUTLET

OTTONE
BRASS

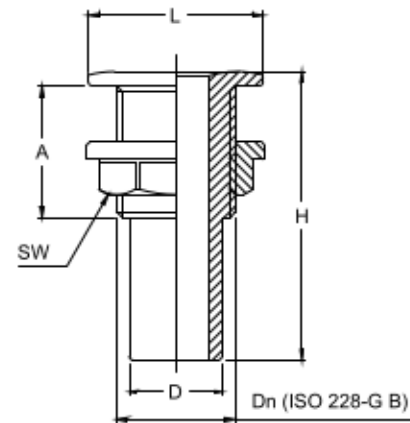


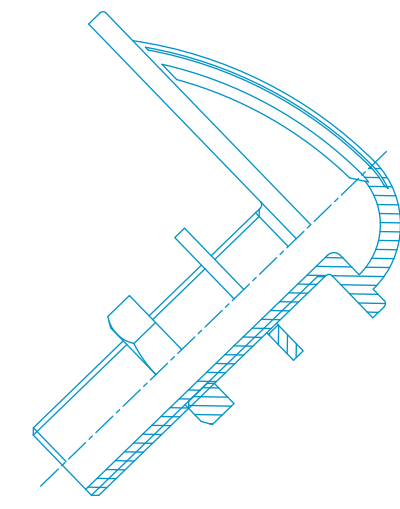
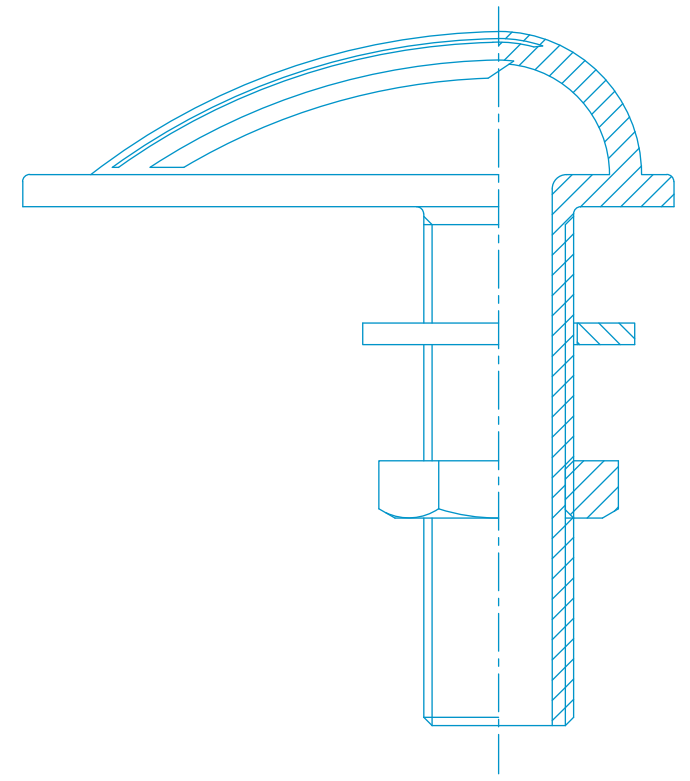
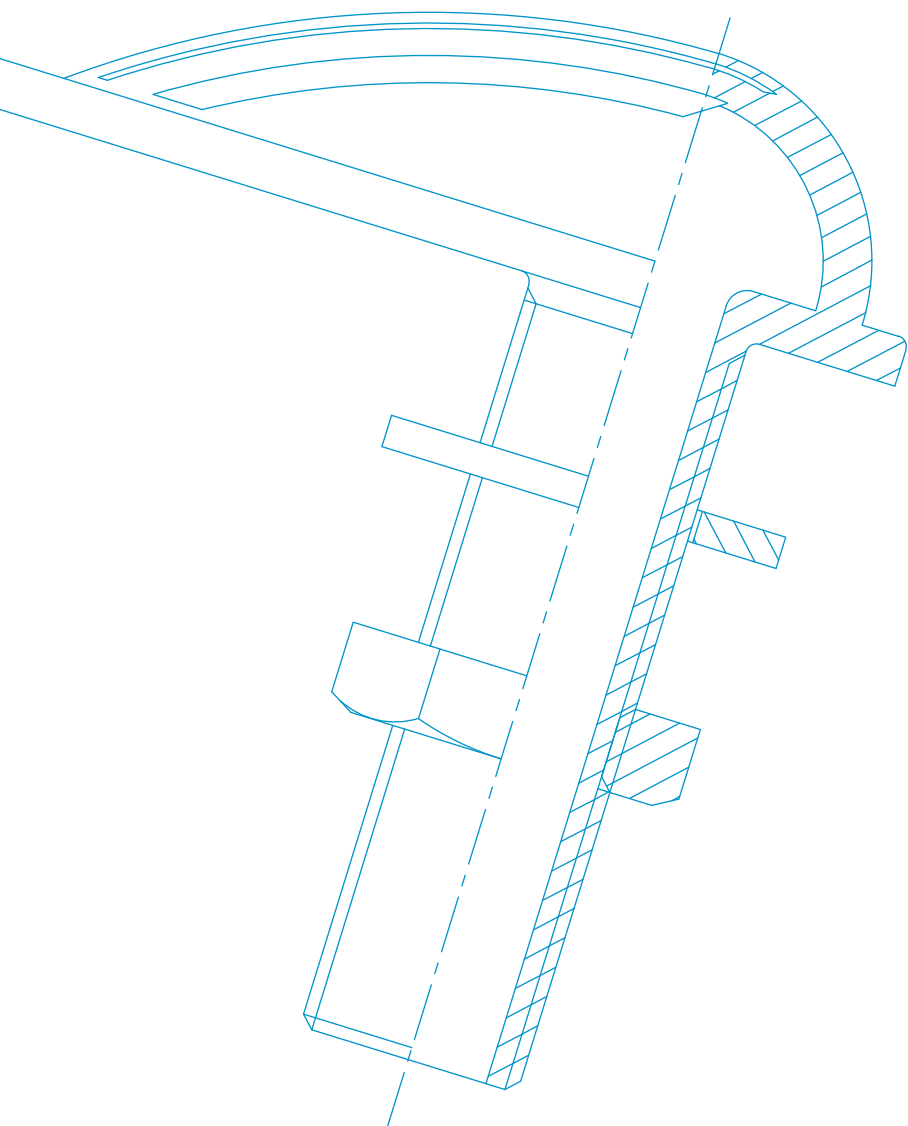
Art. 0041

SCARICO "MICRO" IN OTTONE CROMATO
PER PICCOLI DRENAGGI E AERAZIONE
"MICRO" CHROME PLATED BRASS SKIN FITTING
FOR WATER TANK VENTS AND COCKPIT DRAINS

OTTONE CROMATO
CHROME PLATED BRASS

D	13	18
L	24	30
A	18,5	18,5
H	41,5	41,5
SW	19	24
Dn	3/8"	1/2"





PRESE A MARE E CUFFIE

PRESE A MARE E CUFFIE

Prese a mare e cuffie

PRESE A MARE E CUFFIE

PRESE A MARE E CUFFIE

PRESE A MARE E CUFFIE

PRESE A MARE E CUFFIE
PRESE A MARE E CUFFIE

Intake And Scoop Strainers

INTAKE AND SCOOP STRAINERS

INTAKE AND SCOOP STRAINERS

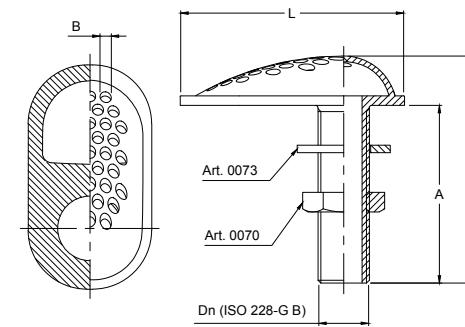
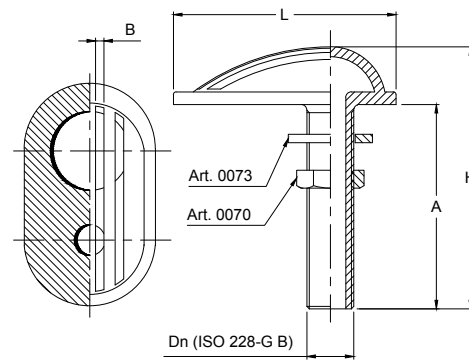


Art. 0045

PRESA A MARE FRESATA
COMPLETAMENTE IN OTTONE
BRASS FULL SLOT INTAKE STRAINER

OTTONE
BRASS

L	80	91	106	108	118	133	157
H	91	97	103	104	105	113	128
A	70,5	72,5	77	77	79	82	91
B	3	3	3	3	3	3	3
Dn	3/8"	1/2"	3/4"	1"	1"1/4	1"1/2	2"



L	106	108	118	133	157
H	103	104	105	113	128
A	77	77	79	82	91
B	6	6	6	6	6
Dn	3/4"	1"	1"1/4	1"1/2	2"



Art. 0048

PRESA A MARE FORATA IN OTTONE
BRASS DRILLED INTAKE STRAINER

OTTONE
BRASS

2 E

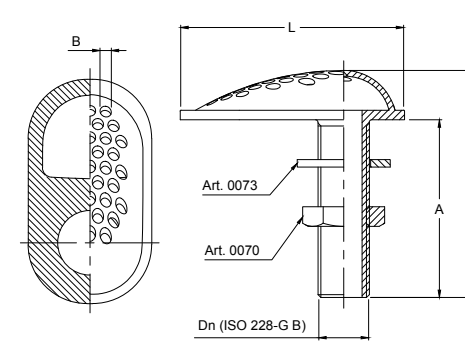
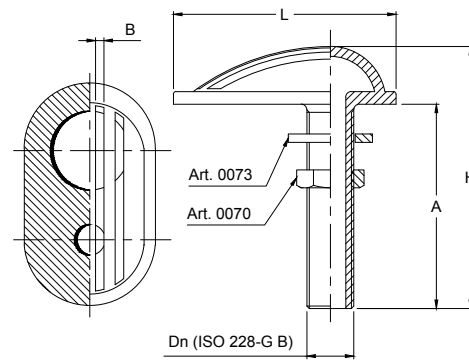


Art. 7045

PRESA A MARE FRESATA COMPLETAMEN-
TE IN OTTONE ANTICORROSIONE
CORROSION-RESISTANT BRASS FULL
SLOT INTAKE STRAINER

OTTONE ANTICORROSIONE
CORROSION-RESISTANT BRASS

L	80	91	106	108	118	133	157
H	91	97	103	104	105	113	128
A	70,5	72,5	77	77	79	82	91
B	3	3	3	3	3	3	3
Dn	3/8"	1/2"	3/4"	1"	1"1/4	1"1/2	2"



L	106	108	118	133	157
H	103	104	105	113	128
A	77	77	79	82	91
B	6	6	6	6	6
Dn	3/4"	1"	1"1/4	1"1/2	2"



Art. 7048

PRESA A MARE FORATA IN OTTONE
ANTICORROSIONE
CORROSION-RESISTANT BRASS DRILLED
INTAKE STRAINER

OTTONE ANTICORROSIONE
CORROSION-RESISTANT BRASS

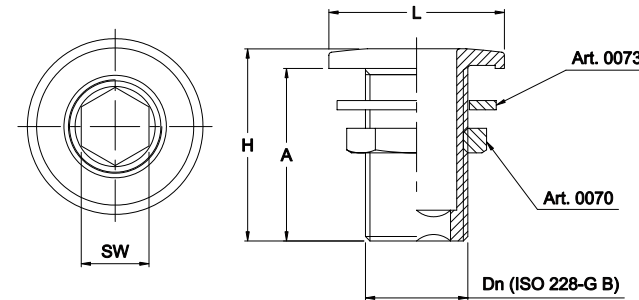
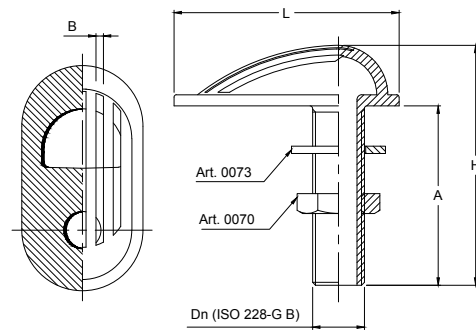


Art. 7049

PRESA A MARE "HIGH FLOW" CON FERITOIE LARGHE IN OTTONE ANTICORROSIONE
 "HIGH FLOW" CORROSION-RESISTANT BRASS INTAKE STRAINER WITH WIDE SLOTS

OTTONE ANTICORROSIONE
CORROSION-RESISTANT BRASS

L	80	91	106	108	118	133	157
H	91	97	103	104	105	113	128
A	70,5	72,5	77	77	79	82	91
B	4	4	4	4	4	4	4
Dn	3/8"	1/2"	3/4"	1"	1"1/4	1"1/2	2"



SW	12	17	22	29	33	42
L	37	47	57	64	72	85
H	61,4	61,4	62,4	62,2	62,2	76,2
A	56	56	56	56	56	70
Dn	1/2"	3/4"	1"	1"1/4	1"1/2	2"



Art. 7044

SCARICO A MARE IN OTTONE ANTICORROSIONE CON ESAGONO INCASSATO
 CORROSION-RESISTANT BRASS THROUGH HULL OUTLET WITH INTERNAL HEXAGON

OTTONE ANTICORROSIONE
CORROSION-RESISTANT BRASS

2 E

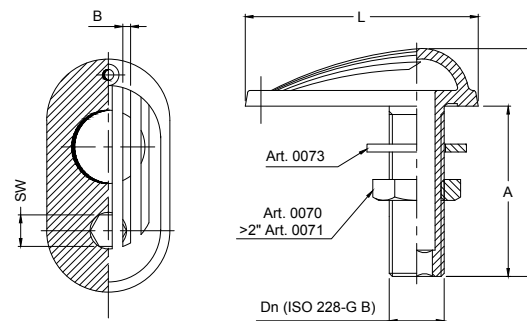
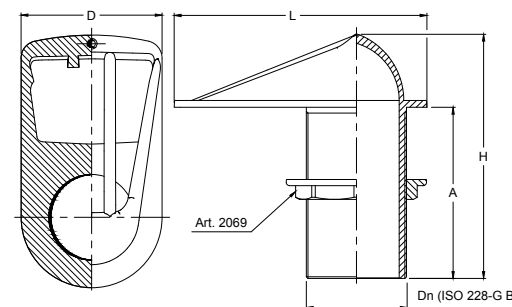


Art. 2049

PRESA A MARE IN BRONZO "HIGH FLOW" CON FERITOIE LARGHE
 "HIGH FLOW" BRONZE INTAKE STRAINER WITH WIDE SLOTS

BRONZO
BRONZE

H	146	146	130	140	158	187	217	285	365
A	115	115	94	100	112	128	152	200	250
L	110	110	124	137	158	202,5	221,5	286	376
D	54	54	65	71	82	111	124	148,5	190
Dn	3/4"	1"	1"1/4	1"1/2	2"	2"1/2	3"	4"	5"



SW	12	17	22	29	33	42	55
L	89	97	111	125	137	160	220
H	87	89	97	105	112	116	133
A	65	65	70	75	80	80	85
B	3	3	3	3	3	3	5
Dn	1/2"	3/4"	1"	1"1/4	1"1/2	2"	2"1/2



Art. 7063

PRESA A MARE IN OTTONE ANTICORROSIONE CON ESAGONO INCASSATO
 CORROSION-RESISTANT BRASS INTAKE STRAINER WITH INTERNAL HEXAGON

OTTONE ANTICORROSIONE
CORROSION-RESISTANT BRASS

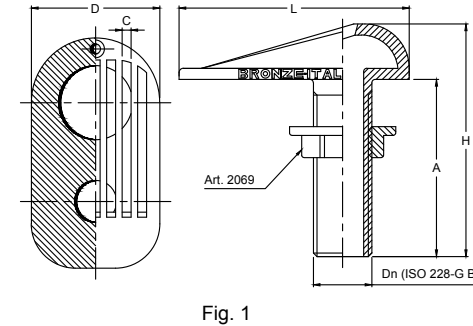
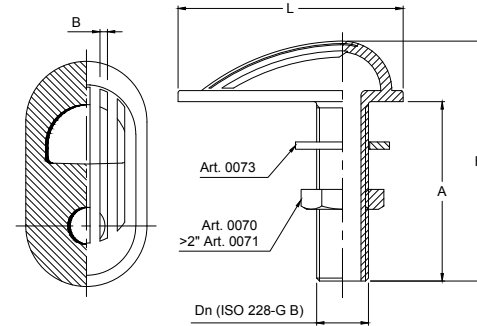


Art. 0050

PRESA A MARE IN OTTONE
BRASS INTAKE STRAINER

OTTONE
BRASS

L	80	91	106	108	118	133	157	201	237	287
H	91	97	103	104	105	113	128	154	183	276
A	70,5	72,5	77	77	79	82	91	112	133	200
B	3	3	3	3	3	3	3	5	5	5
Dn	3/8"	1/2"	3/4"	1"	1*1/4	1*1/2	2"	2*1/2	3"	4"



C	4	4	4	4	4	4	5,5	5,5	5,5
H	96	103,5	108	117	129	144	187	217	285
A	72	78,5	81,5	89	99	109	128	152	200
L	92	103	107	118	132	152	202,5	221,5	286
D	50	58	61	65	70	85	111	124	148,5
Dn	1/2"	3/4"	1"	1*1/4	1*1/2	2"	2*1/2	3"	4"
Fig.	1	1	1	1	1	1	2	2	2



Art. 2050

PRESA A MARE IN BRONZO
BRONZE INTAKE STRAINER

BRONZO
BRONZE

2 E

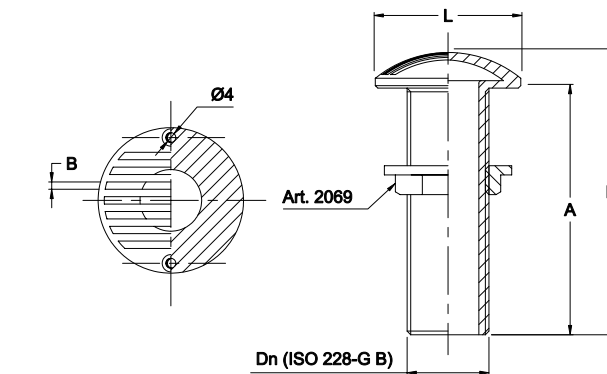
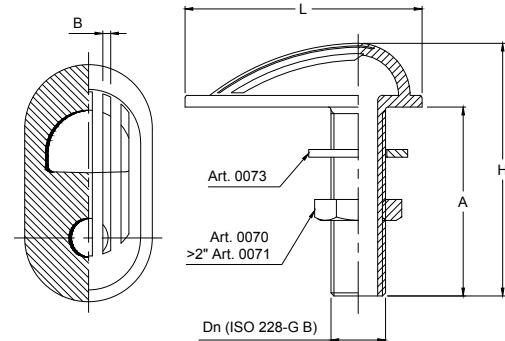


Art. 7050

PRESA A MARE IN OTTONE
ANTICORROSIONE
CORROSION-RESISTANT BRASS
INTAKE STRAINER

OTTONE ANTICORROSIONE
CORROSION-RESISTANT BRASS

L	80	91	106	108	118	133	157	201	237
H	91	97	103	104	105	113	128	154	183
A	70,5	72,5	77	77	79	82	91	112	133
B	3	3	3	3	3	3	3	5	5
Dn	3/8"	1/2"	3/4"	1"	1*1/4	1*1/2	2"	2*1/2	3"



L	59
H	114,5
A	100
B	3
Dn	1"



Art. 2064

PRESA A MARE TONDA INTERAMENTE FRESATA IN
BRONZO CON FORI DI FISSAGGIO
BRONZE ROUND FULL SLOT INTAKE STRAINER WITH
FIXING HOLES

BRONZO
BRONZE



Art. 0060

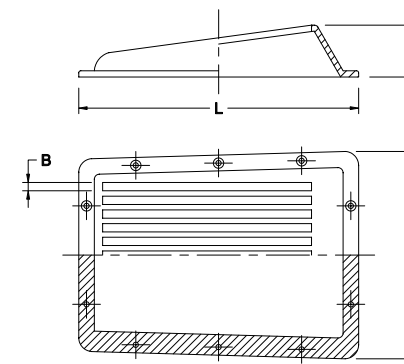
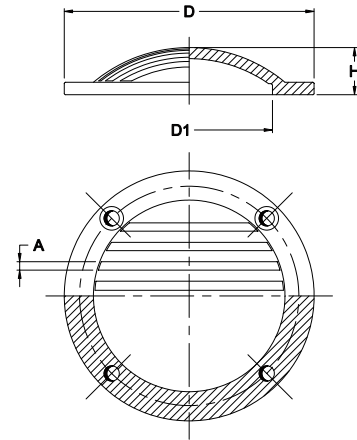
CUFFIA TONDA FRESATA IN OTTONE

BRASS SLOTTED ROUND SCOOP STRAINER

OTTONE

BRASS

H	17	20	23	35
A	4	3	3	3
D1	66	73	85	130
D	90	100	120	180



L	235	265
H	55	50
A	180	200
B	6,5	8
Dn	3"	4"



Art. 0061

CUFFIA FRESATA IN OTTONE

BRASS SLOTTED SCOOP STRAINER

OTTONE

BRASS

Fig.1

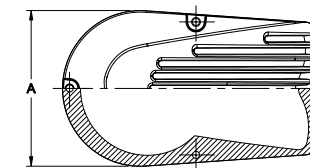
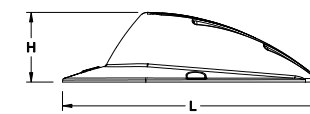
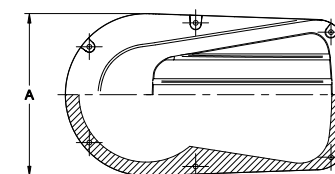
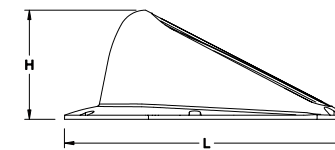


Fig.2



L	122	135	159	189	222	236	340	432	482	575
H	30	35	40	52	60	65	95	120	135	210
A	67	78	93	104	132	143	180	223	275	332
Dn	1"	1*1/4	1*1/2	2"	2*1/2	3"	4"	5"	6"	8"
Fig.	1	1	1	1	1	1	1	1	2	2



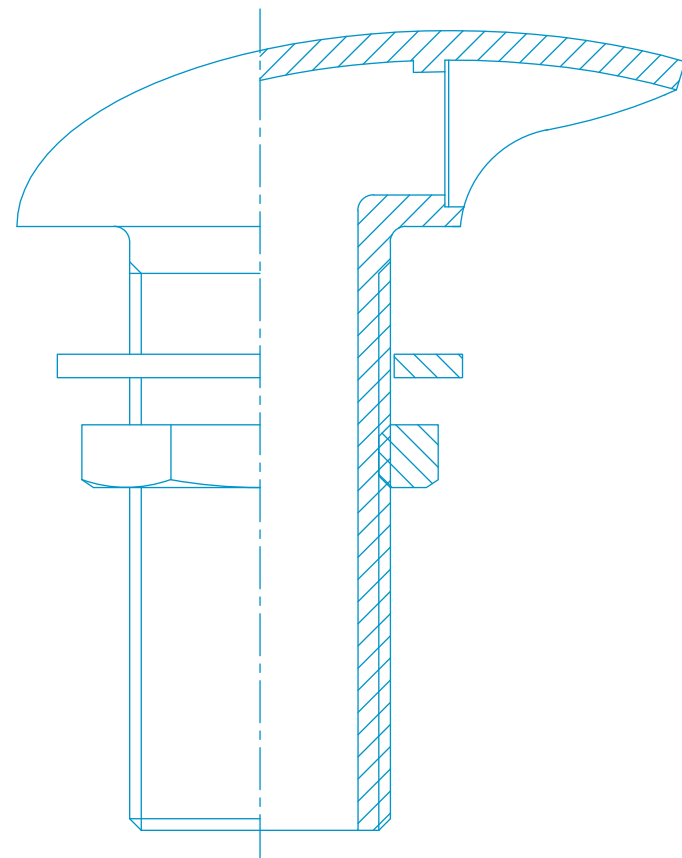
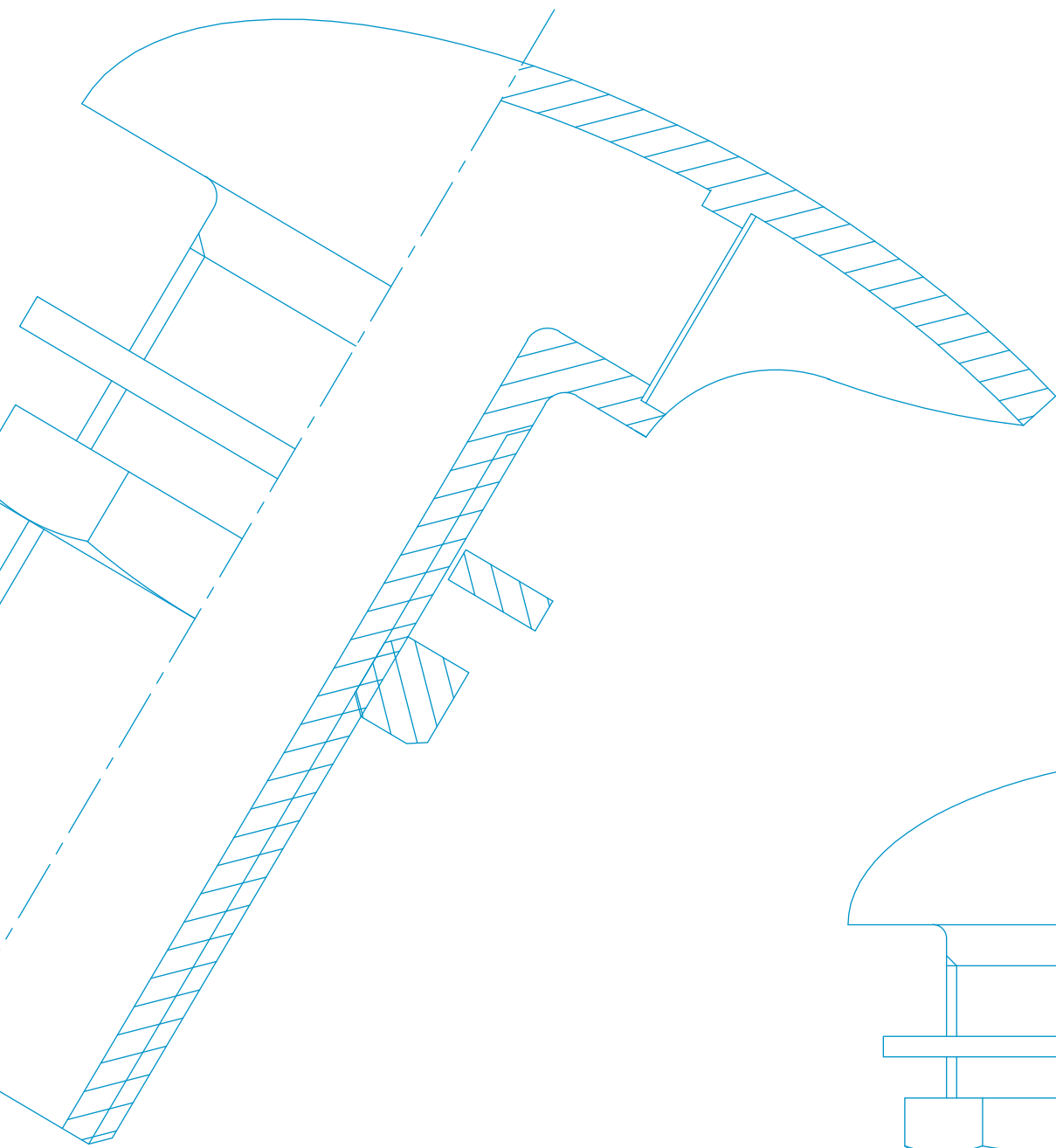
Art. 2062

CUFFIA FRESATA IN BRONZO "GARDA"

"GARDA" BRONZE SLOTTED SCOOP STRAINER

BRONZO

BRONZE



Sfiati e ombrinali SCUPPERS SFIATI E OMBRINALI **SFIATI E OMBRINALI**
SFIATI E OMBRINALI SFIATI E OMBRINALI *Scuppers* SCUPPERS
SFIATI E OMBRINALI **SFIATI E OMBRINALI** SFIATI E OMBRINALI
SFIATI E OMBRINALI SFIATI E OMBRINALI SFIATI E OMBRINALI SCUPPERS

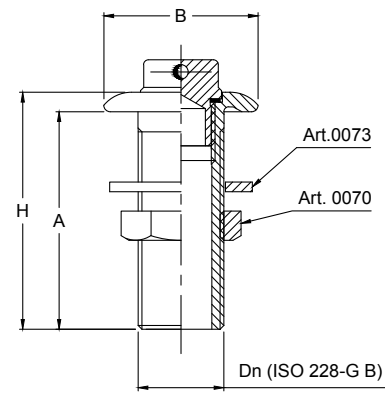


Art. 0040

SCARICO ALLEGGIO IN OTTONE
BRASS THROUGH BILGE OUTLET

OTTONE
BRASS

H	63,5	72
A	58	66
B	40	49
Dn	1/2"	3/4"

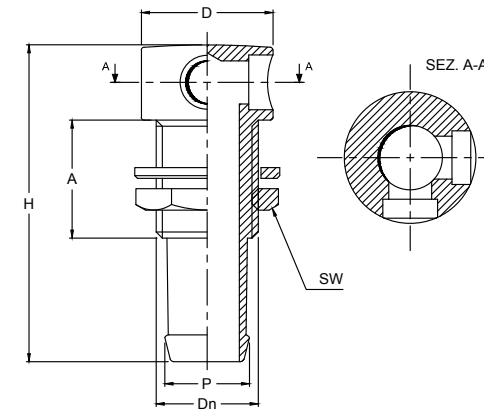


Art. 0035

SFIATO DRITTO IN OTTONE CROMATO
CHROME PLATED BRASS STRAIGHT VENT

OTTONE CROMATO
CHROME PLATED BRASS

D	24	32
H	59	69,5
A	22	26,5
P	16	20
SW	23	32
Dn	19x19"	3/4"

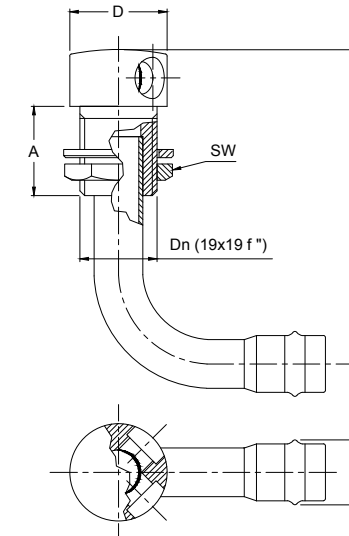
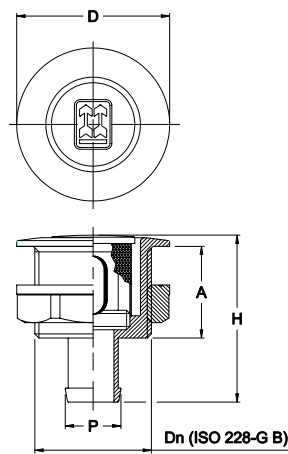


Art. 0034

SFIATO DRITTO A SCOMPARSA
IN OTTONE CROMATO
CHROME PLATED BRASS HIDDEN
STRAIGHT VENT

OTTONE CROMATO
CHROME PLATED BRASS

D	35	55
H	50	60
A	24,5	33
P	16	20
Dn	3/4"	1 1/4"



D	24
H	78
A	22
P	16
SW	23
Dn	19x19 f''



Art. 0036

SFIATO CURVO IN OTTONE CROMATO
CHROME PLATED BRASS ANGLED VENT

OTTONE CROMATO
CHROME PLATED BRASS



Art. 0037

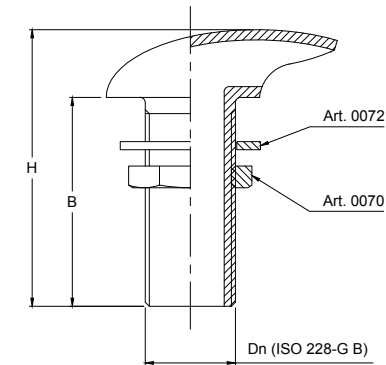
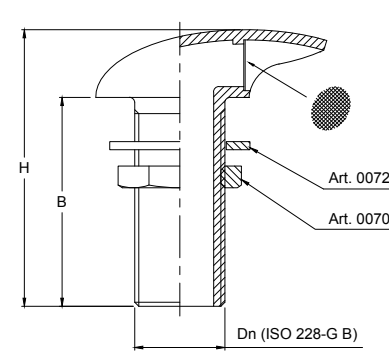
SFIATO "ELLIPSE" IN OTTONE CON RETE INOX ANTIFIAMMA

"ELLIPSE" BRASS AIR PIPE WITH FLAME ARRESTING STAINLESS STEEL MESH

OTTONE

BRASS

H	92	93	95	101	105	112	126
B	70,5	72	75	77	79	79,5	92
Dn	3/8"	1/2"	3/4"	1"	1"1/4	1"1/2	2"



H	92	93	95	101	105	112	126
B	70,5	72	75	77	79	79,5	92
Dn	3/8"	1/2"	3/4"	1"	1"1/4	1"1/2	2"



Art. 0056

OMBRINALE "ELLIPSE" IN OTTONE

"ELLIPSE" BRASS SCUPPER

OTTONE

BRASS

2 F



Art. C0037

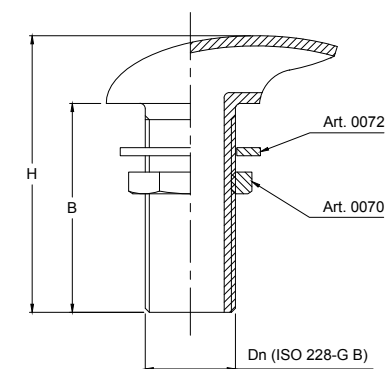
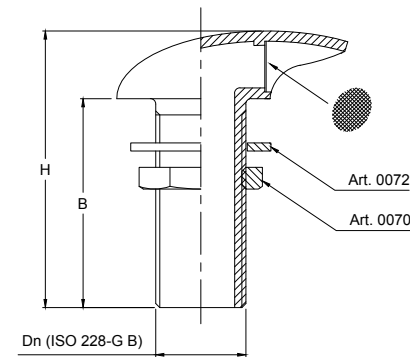
SFIATO "ELLIPSE" IN OTTONE CROMATO CON RETE INOX ANTIFIAMMA

CHROME PLATED BRASS "ELLIPSE" AIR PIPE WITH FLAME ARRESTING STAINLESS STEEL MESH

OTTONE CROMATO

CHROME PLATED BRASS

H	92	93	95	101	105	112	126
B	70,5	72	75	77	79	79,5	92
Dn	3/8"	1/2"	3/4"	1"	1"1/4	1"1/2	2"



H	92	93	95	101	105	112	126
B	70,5	72	75	77	79	79,5	92
Dn	3/8"	1/2"	3/4"	1"	1"1/4	1"1/2	2"



Art. C0056

OMBRINALE "ELLIPSE" IN OTTONE CROMATO
CHROME PLATED BRASS "ELLIPSE" SCUPPER

OTTONE CROMATO

CHROME PLATED BRASS

SFIATI E OMBRINALI – SCUPPERS



Art. 0055

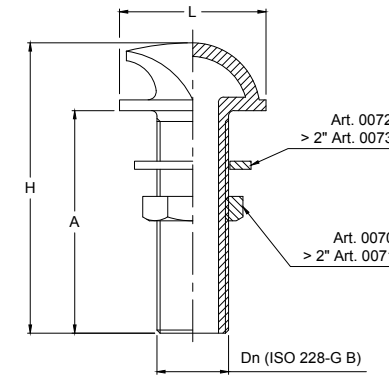
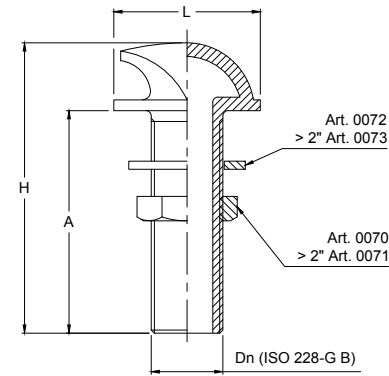
OMBRINALE IN OTTONE

BRASS SCUPPER

OTTONE

BRASS

L	41,5	46,5	54	56,5	61	69	85	119	140	154
H	91	97	102	103	105	113	128	154	183	276
A	70,5	72,5	77	77	79	82	91	112	133	200
Dn	3/8"	1/2"	3/4"	1"	1"1/4	1"1/2	2"	2"1/2	3"	4"



SFIATI E OMBRINALI – SCUPPERS



Art. C0055

OMBRINALE IN OTTONE CROMATO

CHROME PLATED BRASS SCUPPER

OTTONE CROMATO

CHROME PLATED BRASS

L	41,5	46,5	54	56,5	61	69	85	119	140
H	91	97	102	103	105	113	128	154	183
A	70,5	72,5	77	77	79	82	91	112	133
Dn	3/8"	1/2"	3/4"	1"	1"1/4	1"1/2	2"	2"1/2	3"



Art. 7055

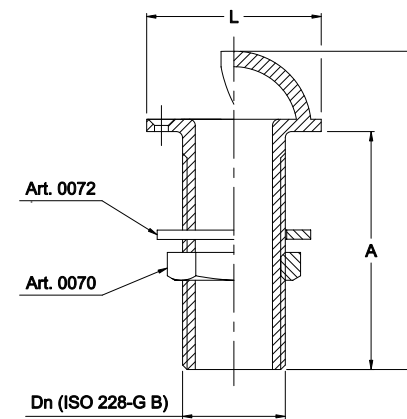
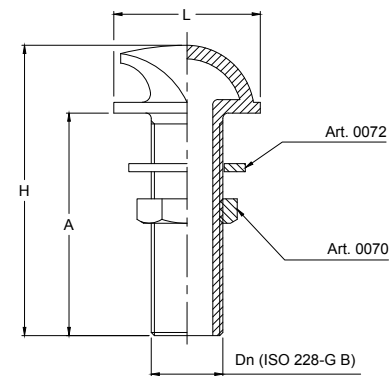
OMBRINALE IN OTTONE
ANTICORROSIONE

CORROSION-RESISTANT
BRASS SCUPPER

OTTONE ANTICORROSIONE

CORROSION-RESISTANT BRASS

L	41,5	46,5	54	56,5	61	69	85
H	91	97	102	103	105	113	128
A	70,5	72,5	77	77	79	82	91
Dn	3/8"	1/2"	3/4"	1"	1"1/4	1"1/2	2"



L	56,5	63	68	86
H	103	105	112	124
A	77	79	80,5	89,5
Dn	1"	1"1/4	1"1/2	2"



Art. 0038

OMBRINALE CON FORO DI FISSAGGIO
IN OTTONE

BRASS SCUPPER WITH FIXING HOLE

OTTONE

BRASS