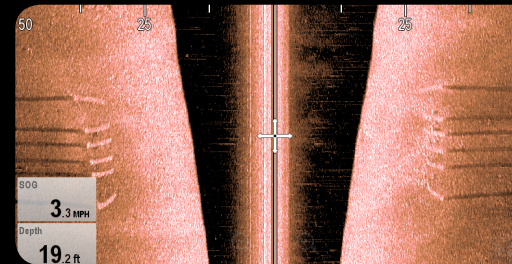
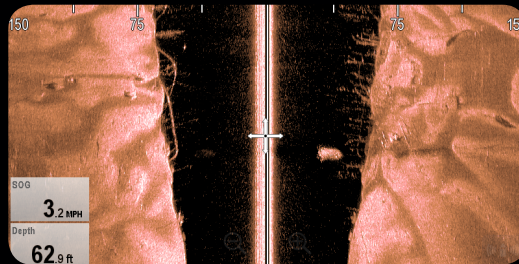
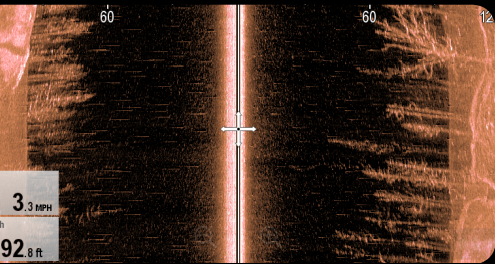


CP200

SIDEVISION™ SONAR



Raymarine®
A FLIR COMPANY

CP200 SIDEVISION™ SONAR

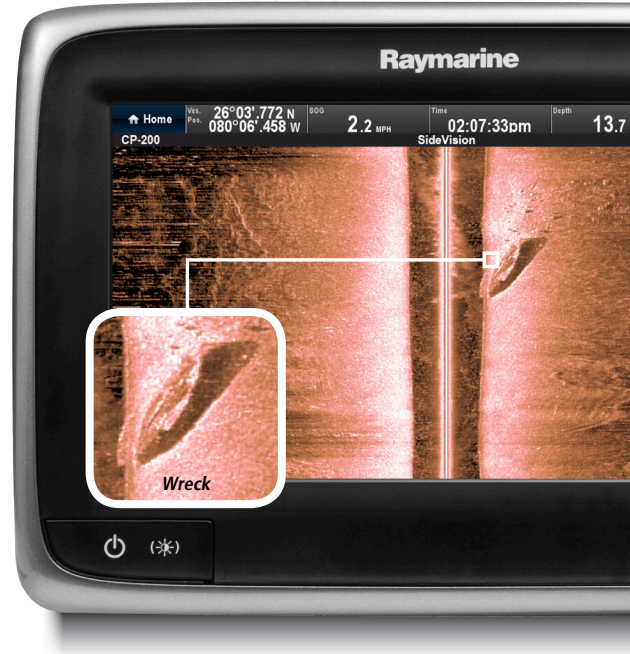
The CP200 CHIRP SideVision™ Sonar expands your underwater horizon with crystal-clear, bank-to-bank displays of fish, bait and underwater structure. Engineered with the same CHIRP sonar technology as Raymarine's award winning DownVision™ the CP200 uses advanced CHIRP signal processing technology to let you see further, see more clearly, and detect more fish than traditional side scanning sonars.

Experience Visionality™

CP200 delivers side scan sonar imagery so close to reality we call it Visionality™. See amazing photo-like imagery of underwater terrain and man-made objects.

Superior Range Performance

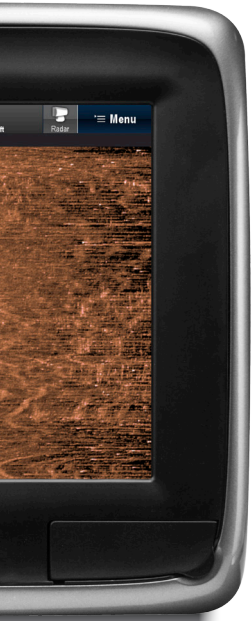
Raymarine CHIRP signal processing delivers high resolution and excellent long range performance. Identify objects and see fish even further, out to 600-feet on each side!



CP200 Key Features

- Network compatible CHIRP SideVision™ sonar for aSeries, cSeries, eSeries and gS Series MFDs
- Multi-sonar compatible: view CHIRP SideVision™ alongside other sources, simultaneously
- Image fish, bait and bottom structure at distances up to 600 feet horizontally per side
- CHIRP signal processing delivers crystal-clear images with amazing detail
- Works seamlessly alongside Raymarine Digital, CHIRP and CHIRP DownVision™ sonar
- Adjustable CPT-200 transducer optimizes performance for shallow or deep water scanning





Dual Independent Transducer Pods

Best-in-class side scan performance using two high-performance transducer pods with dedicated CHIRP sonar channels.

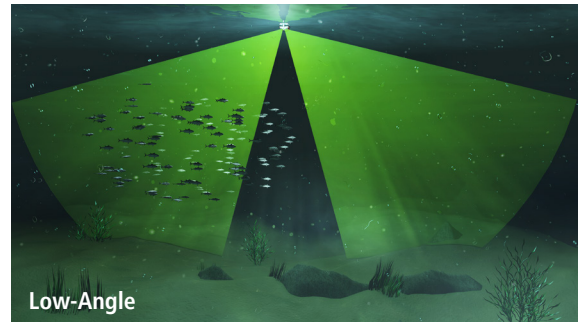


High-Angle

High-Angle Setting for Shallow Water Applications

See Further

Independently adjustable transducer pods enable anglers to preset their SideVision™ transducer angle for either shallow or deep water applications. Left and Right sonar images up to 600'/183m either side of the boat.



Low-Angle

Low-Angle Setting for Deep Water Applications

CPT-200: CHIRP SideVision™ Transducer

Engineered for high performance CHIRP sonar, the CPT-200 transducer is perfectly matched to the CP200's CHIRP transceiver.



CPT-200 with stainless steel carrier

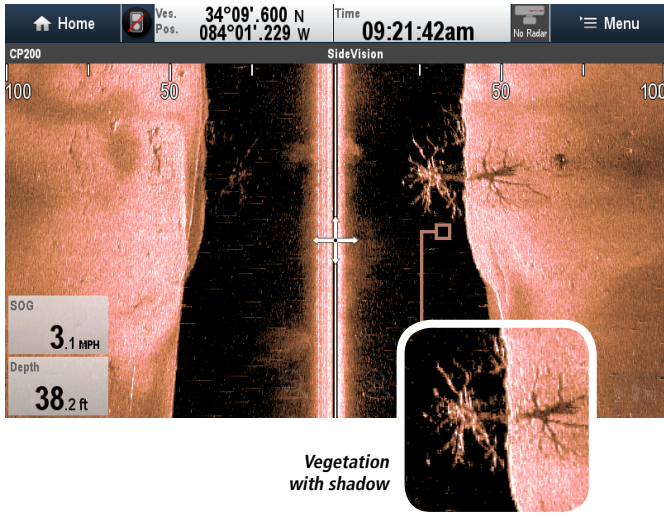
CPT-200 Key Features

- Transom mount CHIRP SideVision™ sonar array for the CP200
- Independently adjustable port and starboard arrays for shallow, mid or deep-water scanning
- Rugged, stainless carrier with kick-up strike protection

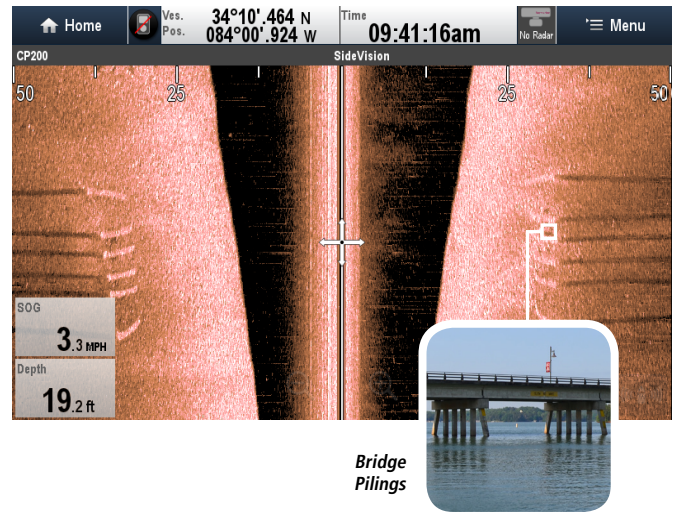
Easy to Network

Connect the CP200 with Raymarine LightHouse™ II-powered multifunction displays, including aSeries, cSeries, eSeries and the gS Series systems.





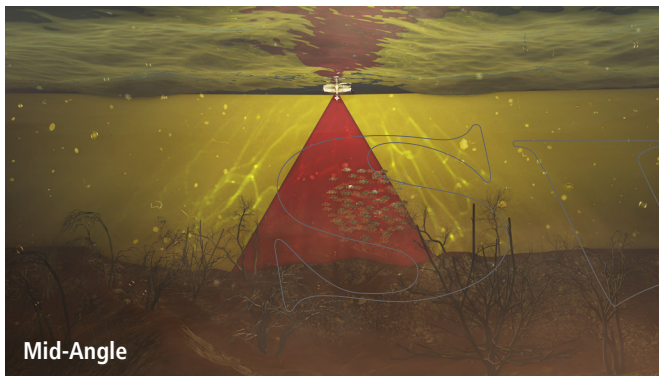
Vegetation with shadow



Bridge Pilings

CHIRP SideVision™ and DownVision™ Together

Combine the CP200 with CHIRP DownVision™ for the ultimate in sonar intelligence, giving you a full 180 degree view of your underwater surroundings.



Mid-Angle

Sidevision™ DownVision™



CP200 Sonar Module and CPT-200 Transducer

PRODUCT SPECIFICATIONS	
Compatible with	aSeries, cSeries, eSeries and gS Series multifunction displays with LightHouse™ II release 10 or higher
Sonar type	CHIRP SideVision™
Nominal supply voltage	12/24V DC Systems
Operating voltage range	10.2 - 32 V DC
Power consumption at full power	3 Watts
Operating temperature range	0°C to +55°C
Storage temperature range	-30°C to +70°C
Waterproofing standard	IPX6 and IPX7
Connections	Power (power cable), transducer (9 pin connector), and Raynet network connector
Transducer info	Maximum range 1200-feet, horizontally 600 feet, left and right
Independent Sonar Channels	2 (1 left and 1 right)

Content Note

The technical and graphical information contained in this brochure, to the best of our knowledge, was correct as it went to press. However, the Raymarine policy of continuous improvement and updating may change product specifications without prior notice. Therefore, unavoidable differences between the product and this brochure may occur from time to time, for which liability cannot be accepted by Raymarine. Some images in this brochure are used for illustration purposes only.

Raymarine
 9 Townsend West
 Nashua, NH 03063
 USA
 T: 603 324 7900
www.raymarine.com

Raymarine®
 A FLIR COMPANY