



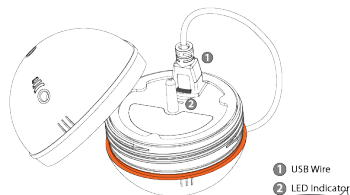
## QUICK GUIDE STEPS TO HELP YOU GET STARTED

EN

### 1. Charge the device

Charge Deeper - Smart Fishfinder. Green light indicates the device is fully charged.

More information (User manual. 2.1. Opening and Charging).

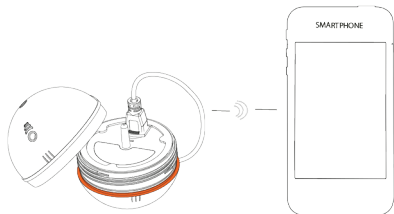


- 1 USB Wire
- 2 LED Indicator

### 2. Pair the device

Turn on Bluetooth on your smartphone and pair it with the Deeper.

More information (User manual. 2.3. Pairing and Connecting).

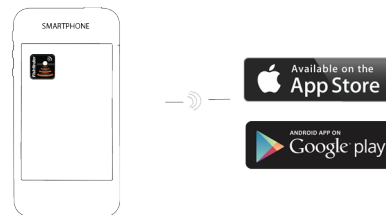


2

### 3. Download application

Download app from App Store or Google Play.

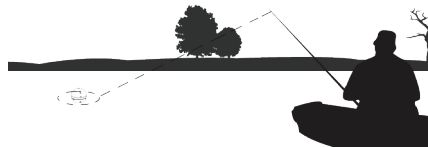
More information (User manual. 2.2. Installing the Application).



### 4. Cast Deeper in to the water

Launch the application on your smartphone or tablet and start using the device.

More information (User manual. 2.4. Fishfinding).

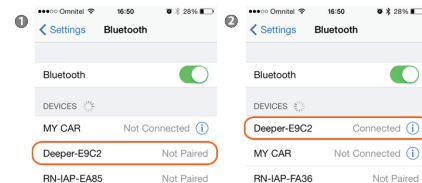


3

### 5. Connect to the device (iOS only)

iOS users (only) have to connect to the device after it has been paired with the smartphone or tablet.

More information (User manual. 2.3. Pairing and Connecting).



Deeper - Smart Fishfinder does not work in small and narrow artificial water tanks like buckets or fish aquariums. Please do not use it in such places.

### Need more help?

Tutorials explaining all the features of Deeper - Smart Fishfinder are available inside our mobile application or on our website.

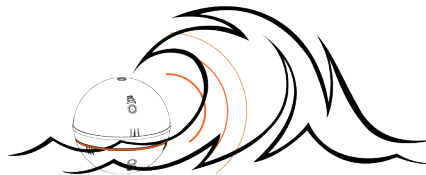
[www.buydeeper.com/usermanual](http://www.buydeeper.com/usermanual)

4

## BLUETOOTH RANGE HELPFUL INFORMATION

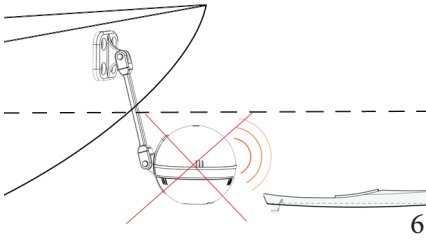
### 1. Weather conditions

Bluetooth range might depend on weather conditions. On a stormy day, waves on the water might temporarily block the Bluetooth signal.



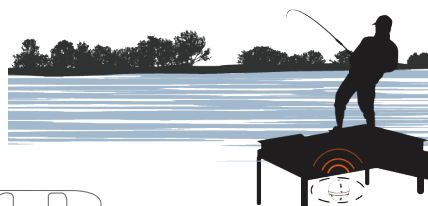
### 2. Do not submerge the device

The Bluetooth signal can not penetrate water. When using any kind of mounting systems, make sure the device is not submerged.



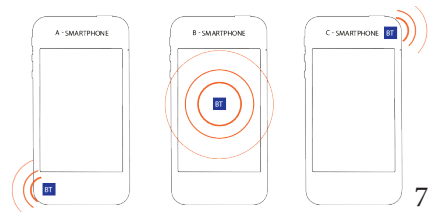
### 3. Different obstacles

Please make sure the signal is not being blocked by major obstacles made from steel, reinforced concrete or other heavy material.



### 4. Bluetooth receiver position

Different smartphones have the Bluetooth receiver in different places. Please check as this will affect the beam direction.



### Holding your smartphone

Because of the different Bluetooth beam directions on different smartphone models, the Bluetooth range might vary slightly. Try to find the best option for holding your smartphone or tablet for the best available Bluetooth signal strength.

