

**LOWRANCE®**

# HOOK-3x

Operation manual

ENGLISH

SVB



**HOOK-3x**

**Copyright © 2015 Navico**

**All rights reserved.**

Lowrance® and Navico® are registered trademarks of Navico.

**Navico may find it necessary to change or end our policies, regulations and special offers at any time. We reserve the right to do so without notice. All features and specifications subject to change without notice.**

***Compliance Statement:***

***Lowrance HOOK-3x***









- Comply with CE under EMC directive 2004/108/EC
- Comply with the requirements of level 2 devices of the Radiocommunications (Electromagnetic Compatibility) standard 2008.

The relevant Declaration of Conformity is available in the following website under model documentation section: <http://www.lowrance.com>.



**WARNING:** It is your sole responsibility to install and use this instrument in a manner that will not cause accidents, personal injury or property damage. Always observe safe boating practices.

# Introduction

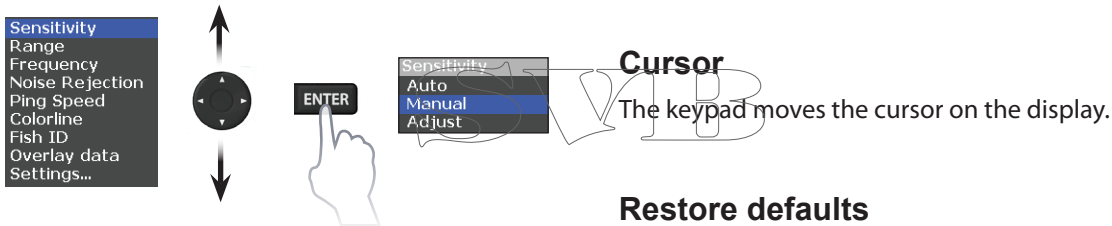
Unit Controls	
	<b>LIGHT/POWER:</b> controls backlight level and turns unit on/off
	<b>KEYPAD:</b> controls cursor & selects items on menus
	<b>FREQUENCY:</b> changes the transducer frequency
	<b>MENU:</b> opens settings and page menus
	<b>ENTER:</b> finalizes menu selections
	<b>ZOOM KEYS:</b> (+) zooms in display; (-) zooms out display

Getting Started	
<b>Turn unit on/off</b>	To turn on/off the unit, press and hold the <b>LIGHT/POWER</b> key for three seconds.
<b>Adjusting the backlight</b>	Press the <b>LIGHT/POWER</b> key to switch backlight levels. This unit has 11 backlight levels.
<b>Muting audio</b>	Select Audio from the Settings menu to turn on/off unit audio.

# Basic Operation

## Accessing menu items

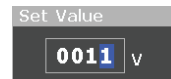
The keypad and **ENTER** key are used to select menu items and open submenus. Use the keypad to highlight the desired item and press **ENTER** to open its submenu or dialog.



## Dialogs

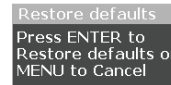
Dialogs are used for user input or for presenting information to the user.

Depending on the type of entry, different methods are used to confirm, cancel or close the dialog.

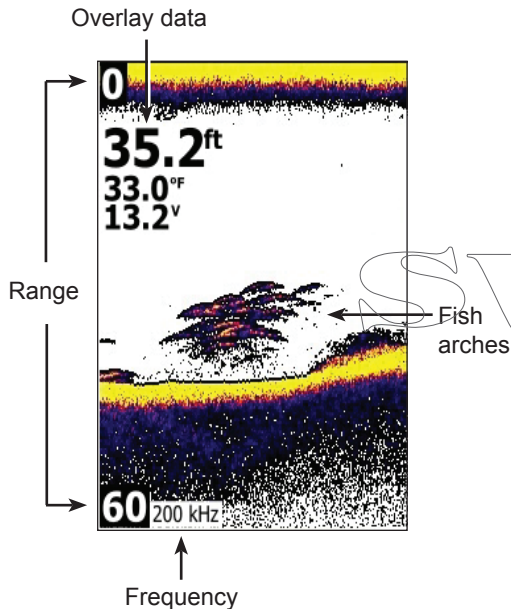


## Restore defaults

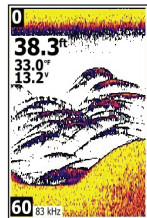
Resets the unit to default settings. Restore defaults is accessed on the Settings menu.



# Sonar Operation



## Sonar Menu



Sonar page



Sensitivity
Range
Frequency
Noise Rejection
Ping Speed
Colorline
Fish ID
Overlay data
Settings...

Sonar menu

## Sensitivity

Controls the level of detail shown on the display. Too much detail will clutter the screen. If Sensitivity is set too low, desired echoes may not be displayed.

Sensitivity	
<b>Auto</b>	Default setting; works well under most conditions, reducing the need for adjustments.
<b>Manual</b>	Enables full control of sensitivity settings
<b>Adjust</b>	Full control of sensitivity in manual mode; limited control of sensitivity in Auto mode

## Colorline

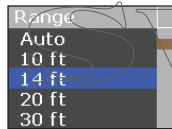
Separates strong sonar echoes from weak echoes, making it easier to distinguish fish or structure from the bottom.

A hard return will be shown as a wide, bright yellow area, whereas a soft return will be a narrow reddish-blue area.

## Range

Selects the water depth visible on the screen.

The unit will not lock onto the bottom, if the selected range is too shallow.

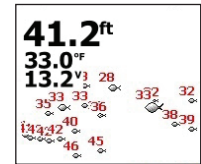


## Frequency

Used to select the unit's sonar frequency. This unit supports 83 kHz and 200 kHz frequencies. Frequency can also be adjusted by pressing the Frequency key.

## Fish ID

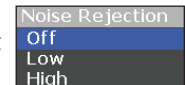
Displays fish echoes as fish symbols instead of fish arches.



**NOTE:** *Fish ID is not the most accurate method of fish detection as it can display structure and suspended debris as fish symbols on the display.*

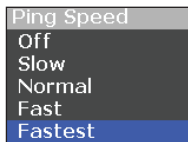
## Noise Rejection

Uses advanced signal processing to filter out the effects noise (boat pumps, water conditions, engine ignition systems, etc.) has on your display.



## Ping Speed

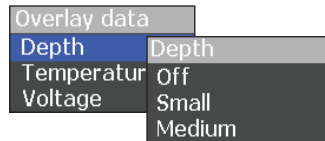
Controls the rate of sonar pings transmitted by the transducer. Ping speed adjustments can help reduce interference from other transducers.



The default ping speed is optimized for most fishing conditions, so adjustments are rarely necessary.

## Overlay data

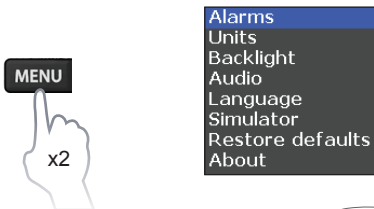
Select Overlay data to add Depth, Temperature and/or Voltage data to the screen. You can also select the size of data overlay.



SVMB

# Settings

## Settings menu



## Alarms

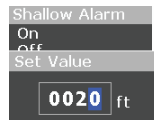
Enables alarms and selects alarm thresholds.

Alarms	
Voltage	Sounds the alarm when voltage exceeds/falls below the selected threshold
Depth	Sounds the alarm when the vessel enters water deeper than the selected threshold
Shallow	Sounds the alarm when the vessel enters water shallower than the selected threshold



## To input threshold values:

1. Select Set Value
2. Press the keypad up or down to increase/decrease the numerical value.
3. Press the keypad left/right to select the previous/next digit.



Selects the unit of measure used for depth and temperature (Metric or US Standard).



## Backlight

Adjusts the brightness of the backlight. This unit has 11 backlight levels. The backlight can also be adjusted by tapping the **LIGHT/POWER** key.



## **Audio**

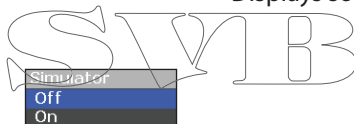
Turns on/off unit audio.

## **Language**

Selects the language used on menus, dialogs and text boxes. The unit will restart when the language is changed.

## **Simulator**

Simulates sonar activity allowing you to become familiar with the unit before taking it out on the water.



## **Restore Defaults**

Resets the unit to default settings.

A semi-transparent menu box with a title bar labeled 'Restore defaults'. Below the title bar, the text reads: 'Press ENTER to Restore defaults or MENU to Cancel'.

## **About**

Displays software information about the unit.

<b>HOOK-3x</b>	
<b>General</b>	
<b>Case Size</b>	5.4" H (134 mm) x 6.8" W (174 mm); 6" H (152 mm) with bracket
<b>Display</b>	(3.5" (8.9 mm) diagonal) 256 color TFT LCD
<b>Waterproof standard</b>	IPX7
<b>Backlight</b>	LED (11 levels)
<b>Power</b>	
<b>Transmit Power</b>	100 W RMS
<b>Power Requirement</b>	12 V
<b>Voltage Input</b>	10 to 17 V
<b>Fuse type</b>	3-amp Automotive
<b>Sonar</b>	
<b>Max depth</b>	800 ft (244 m)
<b>Transducer Frequency</b>	83/200 kHz
<b>Max speed</b>	70 mph
<b>Transducer</b>	83/200 kHz skimmer
<b>Transducer cable</b>	20 ft (6 m)

## **Contact information**

### **Customer Service**

AMER: 800-628-4487

EMEA: +44 1794 51 0010

APAC: 1300 628426



US: <http://store.navico.com>

Other countries: Visit your local dealer or distributor.

### **Visit our website**

For additional regional support information:  
[www.lowrance.com/technicalsupport](http://www.lowrance.com/technicalsupport)



**LOWRANCE®**