



## GPS Antenna GA-22 Installation Guide

AMEC GA-22 is our latest GPS antenna designed for AMEC AIS products. It can also be a replacement for other navigational devices.

The GPS antenna is engineered to meet rigorous demands of the marine environment. It is tested with AMEC AIS transponders and has passed all relevant environmental tests. Its UV resistant enclosure is IP67 waterproof. The built-in high-performance LNA (low noise amplifier) ensures excellent sensitivity.

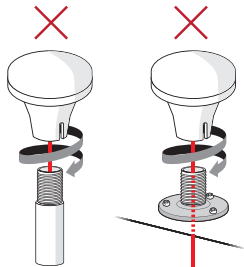
GA-22 has 2 mounting options: pole mount and base mount. It has 10-meter RG174 cable that facilitates the routing and installation of the GPS Antenna.

### Equipment's in the box:

- GPS Antenna with 10m cable
- GPS Antenna mounting base and screws

### **⚠ WARNING!**

Applicable to Pole and Base mount installations.  
The GPS Cable should not be routed through the middle opening of the pole or the base mount.



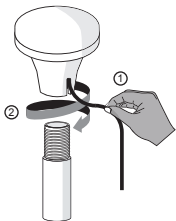
## Pole Mounting:

For pole mounting the GA-22, a 1 inch 14 TPI thread pole will be required.

- ① Align the GPS cable with the opening slot found on the side of the GPS Antenna.

Note: Lightly pull the GPS cable outward to ensure that the cable is not lodged between the GPS Antenna and the pole while is being secured.

- ② Align the GPS Antenna to the pole and turn clockwise until is securely tightened.



## Base Mounting:

- ① Mount the base with the provided screws.
- ② Align the GPS cable with the opening slot found on the side of the GPS Antenna.

Note: Lightly pull the GPS cable outward to ensure that the cable is not lodged between the GPS Antenna and the pole while is being secured.

- ③ Align the GPS Antenna to the pole and turn clockwise until is securely tightened.

