

Operational Overview

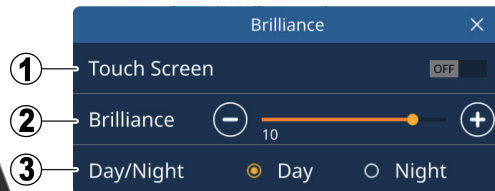
Power/Brilliance key and microSD card slots

Peel the cover from the bottom to show:

microSD card slots (2 places)
Note: Insert cards on an angle towards the back of the unit.
Forced shut-down button

Power/Brilliance key

- Long press: Turn power on/off.
- Short press: Show the Brilliance settings pop up window. Adjust the brilliance.

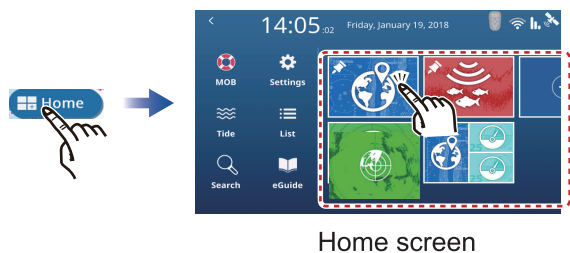


Brilliance settings pop up window

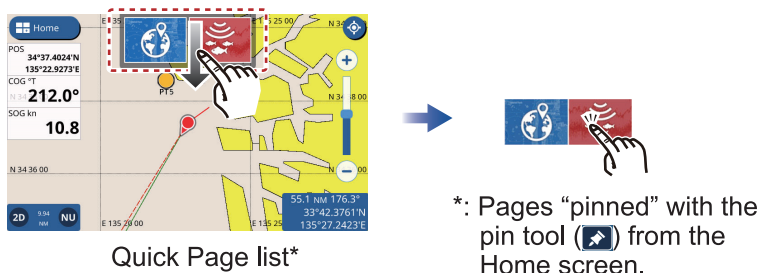
- ① Lock the touch screen.
- ② Adjust the screen brilliance.
- ③ Change the color scheme.

How to select the displayed page

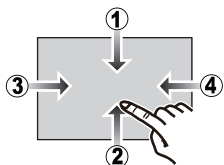
Method 1: From the Home screen



Method 2: From the Quick Page list



Edge-swipe functions



- ① Top edge of the screen, downwards: Shows the Quick Page list.
- ② Bottom edge of the screen, upwards: Shows the layered menu.
- ③ Left edge of the screen, rightwards: Shows the data boxes.
- ④ Right edge of the screen, leftwards: Shows the slide-out menu.

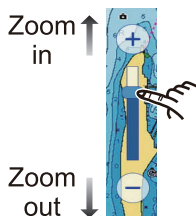
Chart Plotter

Zoom in/Zoom out

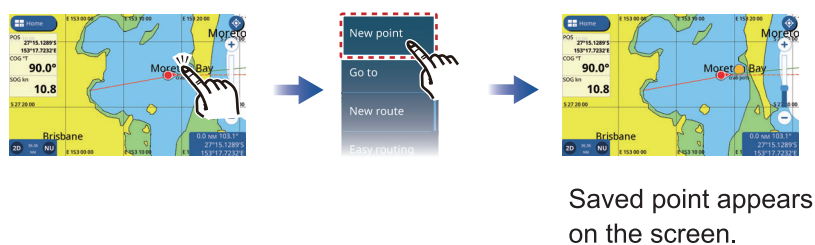
Method 1: Screen-pinch



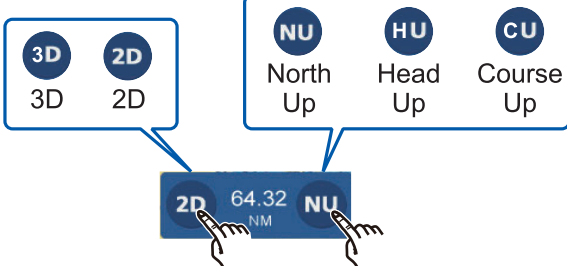
Method 2: Slide bar



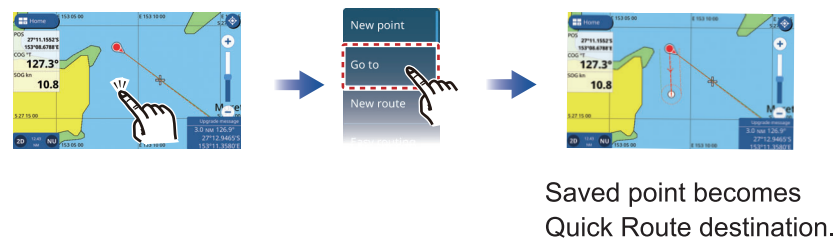
Point Creation



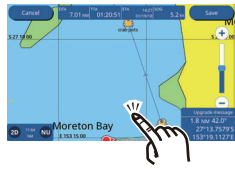
Changing the display orientation



Quick Route Creation

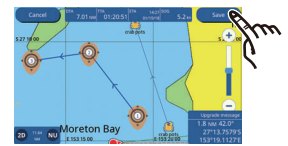


Planned Route Creation



Tap the location of the next waypoint.

Repeat



Tap Save route after entering the final waypoint.

Radar

Standby/Transmit



TX : Transmitting

TX : In standby

Fish Finder

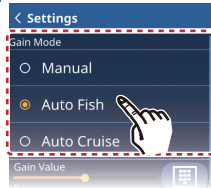
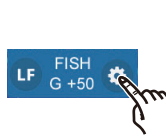
Frequency Selection



HF : High Freq.

LF : Low Freq.

Gain mode selection

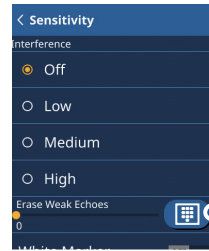
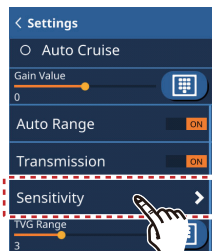


Auto modes: Tap [Auto Fishing] or [Auto Cruise].
Manual mode: Tap [Manual].



For manual mode, drag the slider icon (circle).

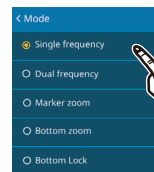
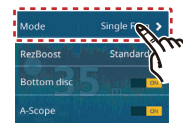
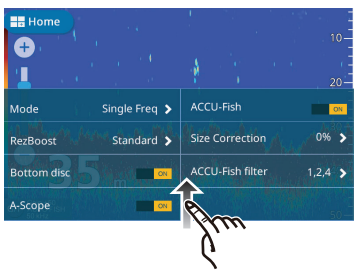
Echo Adjustments



Reduce interference

Remove weak echoes

Display mode selection



- Single frequency
- Dual frequency
- Marker Zoom
- Bottom Zoom
- Bottom Lock

Instruments

Instrument selection



Repeat
(Up to 7 pages available)

Présentation des fonctions

Touche « Power/Brilliance » et fentes pour carte microSD

Retirez le cache depuis le bas pour découvrir :

Fentes pour carte microSD (2 emplacements)
Remarque : insérez les cartes selon un angle vers l'arrière de l'unité.

Bouton d'arrêt forcé

Touche « Power/Brilliance »

- Pression longue : met l'équipement sous/hors tension.
- Pression courte : affiche la fenêtre pop-up de réglage « Brilliance ». Règle la brillance.

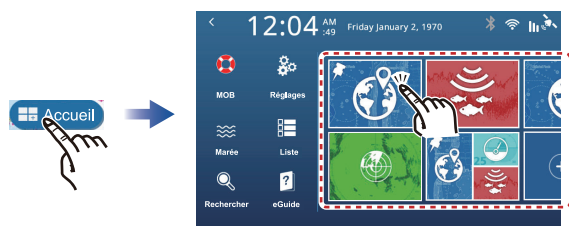


Fenêtre pop-up de réglage « Brilliance »

- ① Verrouille l'écran tactile.
- ② Règle la brillance de l'écran.
- ③ Modifie la couleur.

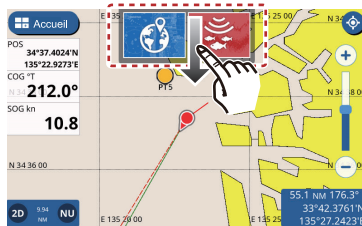
Sélection de la page affichée

Méthode 1 : depuis l'écran Home.



Écran Home

Méthode 2 : depuis la liste « Quick Page »

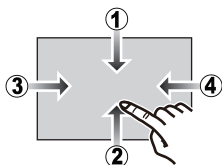


Liste « Quick Page »*



* : pages « épinglées » avec l'outil épingle (📌) depuis l'écran Home.

Fonctions de balayage de l'écran

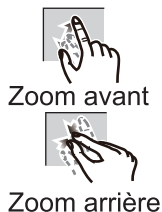


- ① Côté supérieur de l'écran, vers le bas : affiche la liste « Quick Page »
- ② Côté inférieur de l'écran, vers le haut : affiche le menu « Layer ».
- ③ Côté gauche de l'écran, vers la droite : affiche les zones de données.
- ④ Côté droit de l'écran, vers la gauche : affiche le menu « Slide-out ».

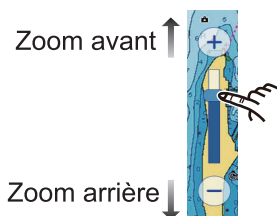
Traceur

Zoom avant/Zoom arrière

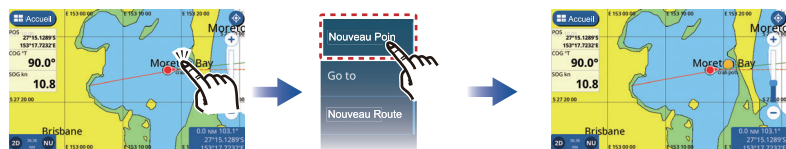
Méthode 1 : pincement sur l'écran



Méthode 2 : curseur

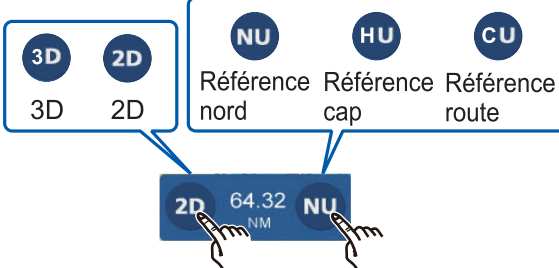


Création d'un point



Le point sauvegardé s'affiche à l'écran.

Modification de l'orientation de l'affichage

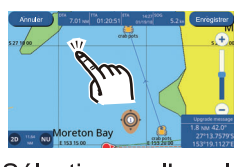
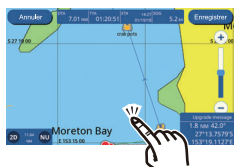


Création d'une « Quick Route »

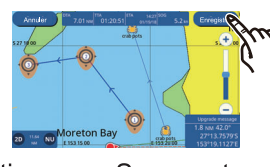


Le point sauvegardé devient la destination « Quick Route ».

Création d'une « Planned Route »



Répétez l'opération



Sélectionnez l'emplacement du prochain waypoint.

Sélectionnez « Save route » après avoir saisi le waypoint final.

Radar

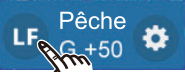
Veille/Transmission



TX : Transmission
TX : Mode veille

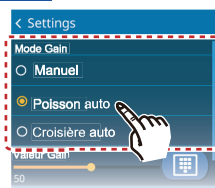
Sondeur

Sélection d'une fréquence



HF : Haute Fréq.
LF : Basse Fréq.

Sélection du mode Gain



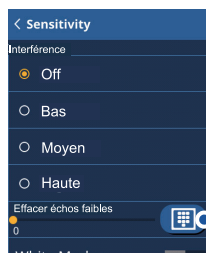
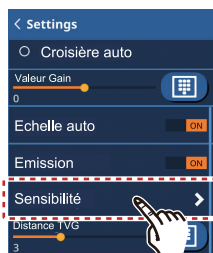
Modes Auto : sélectionnez [Auto Fishing] ou [Auto Cruise].

Mode Manuel : sélectionnez [Manual].



Pour le mode manuel, faites glisser l'icône du curseur (cercle).

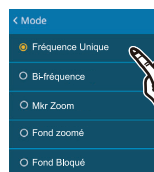
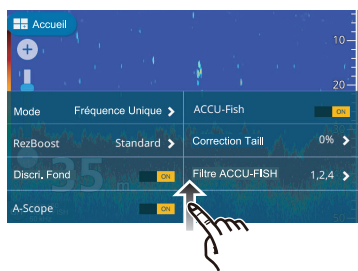
Réglages de l'écho



— Réduit les interférences

— Supprime les échos de faible intensité

Sélection du mode d'affichage



- Mono-fréquence
- Bi-fréquence
- Zoom sur Marqueur
- Zoom Fond
- Verrouillage de Fond

Instruments

Sélection des instruments



Répétez l'opération (jusqu'à 7 pages disponibles)

Descripción general de funcionamiento

Tecla de encendido/brillo y ranuras para tarjetas microSD

Levante la tapa desde abajo para ver:

- Dos ranuras para tarjetas microSD.
- Nota: Inserte las tarjetas en ángulo hacia la parte posterior de la unidad.
- Botón para forzar el apagado

Tecla de encendido/brillo

- Pulsación larga: enciende y apaga el equipo.
- Pulsación corta: muestra la ventana emergente de ajuste de brillo. Ajusta el brillo.



Ventana emergente de ajuste de brillo

- 1 Bloquear la pantalla táctil.
- 2 Ajustar el brillo de la pantalla.
- 3 Cambiar el esquema de color.

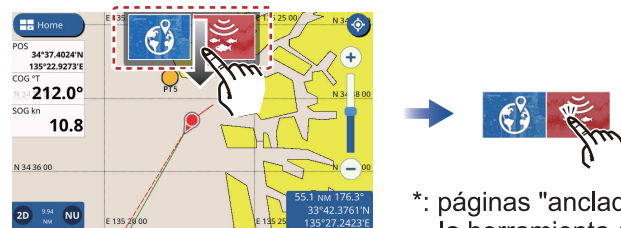
Cómo seleccionar la página mostrada

Método 1: desde la pantalla de inicio



Pantalla de inicio

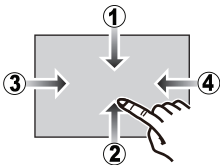
Método 2: desde la lista de páginas rápidas



Lista de páginas rápidas*

*: páginas "ancladas" mediante la herramienta de chincheta (📌) de la pantalla de inicio.

Deslizamiento desde el borde para realizar funciones específicas



- 1 Del borde superior de la pantalla hacia abajo: muestra la lista de páginas rápidas.
- 2 Del borde inferior de la pantalla hacia arriba: muestra el menú de capas.
- 3 Del borde izquierdo de la pantalla hacia la derecha: muestra los cuadros de datos.
- 4 Del borde derecho de la pantalla hacia la izquierda: muestra el menú emergente.

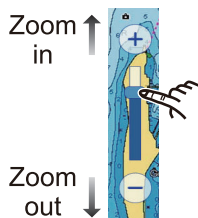
Plóter de cartas

Zoom in/Zoom out

Método 1: pellizcar la pantalla



Método 2: barra deslizante



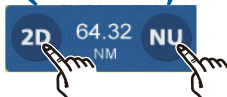
Creación de puntos



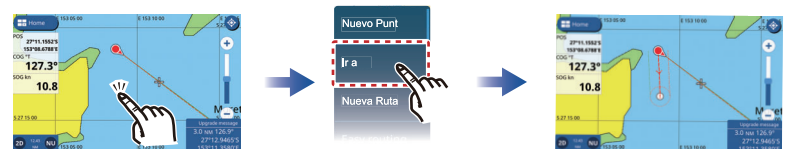
El punto guardado aparecerá en la pantalla.

Cambio de la orientación de la presentación

- 3D 3D
- 2D 2D
- NU Norte arriba
- HU Rumbo arriba
- CU Curso arriba

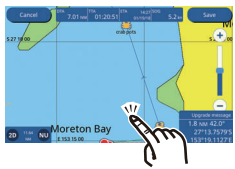


Creación de rutas rápidas



El punto guardado se convertirá en el destino de la ruta rápida.

Creación de rutas planificadas



Toque la ubicación del siguiente waypoint.

Repetir



Una vez introducido el waypoint final, toque el botón de guardar ruta.

Radar

Espera/transmisión



TX : transmitiendo
TX : en espera

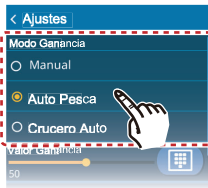
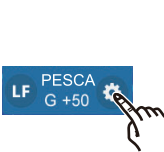
Sonda de pesca

Selección de frecuencia



HF : Frec. Alta
LF : Freq. Baja

Selección del modo de ganancia



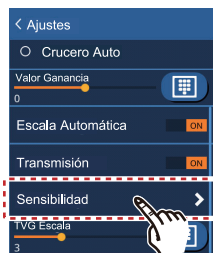
Modos automáticos: toque [Auto Pesquero] o [Auto Crucero].

Modo manual: toque [Manual].



En el modo manual, arrastre el control deslizante (círculo).

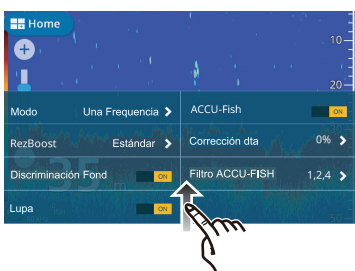
Ajustes de eco



Reducir interferencias

Eliminar ecos débiles

Selección del modo de presentación



- Frecuencia única
- Frecuencia dual
- Zoom con marcador
- Zoom del fondo
- Enganche del fondo

Instrumentos

Selección de instrumentos



Repetir
(Hasta 7 páginas disponibles)

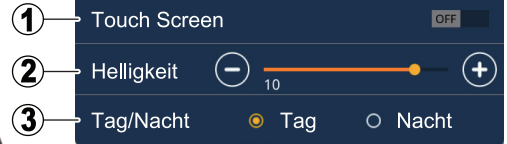
Funktionsübersicht

Ein/Aus- und Helligkeitstaste und microSD-Kartensteckplätze

Untere Abdeckung abnehmen, um Folgendes freizulegen:

- microSD-Kartensteckplätze (2 Steckplätze)
- Hinweis: Karten zur Rückseite des Gerätes ausgerichtet einsetzen.
- Taste für Zwangsabschaltung

- Ein/Aus- und Helligkeitstaste
- Lang drücken: Gerät ein-/ausschalten.
 - Kurz drücken: Pop-up-Fenster für die Helligkeitseinstellungen anzeigen. Helligkeit einstellen.

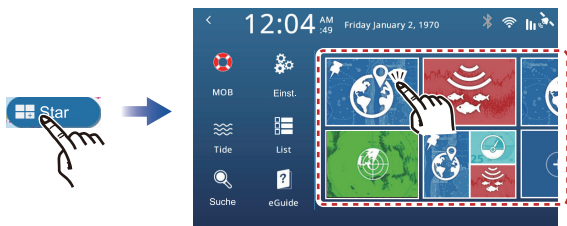


Pop-up-Fenster für die Helligkeitseinstellungen

- 1 Sperren des Touchscreens
- 2 Anpassen der Bildschirmhelligkeit
- 3 Ändern des Farbschemas

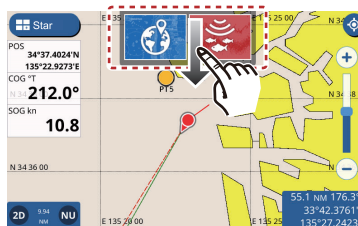
Auswählen der angezeigten Seite

Methode 1: Über den Startbildschirm



Startbildschirm

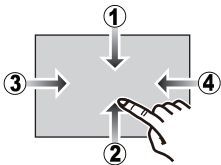
Methode 2: Über die Quickpage-Liste



Quickpage-Liste*

*: Mit dem Pin-Tool (📌) über die Startseite angeheftete Seiten.

Randwischfunktionen



- 1 Vom oberen Bildschirmrand nach unten: Anzeige der Quickpage-Liste
- 2 Vom unteren Bildschirmrand nach oben: Anzeige des Ebenenmenüs
- 3 Vom linken Bildschirmrand nach rechts: Anzeige der Datenfelder
- 4 Vom rechten Bildschirmrand nach links: Anzeige des Schiebemenüs

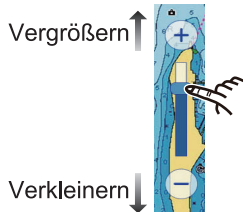
Kartenplotter

Vergrößern/Verkleinern

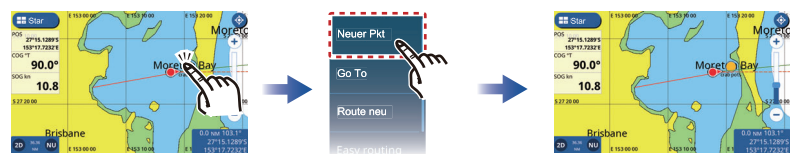
Methode 1: Bildschirm zusammendrücken



Methode 2: Schieberegler

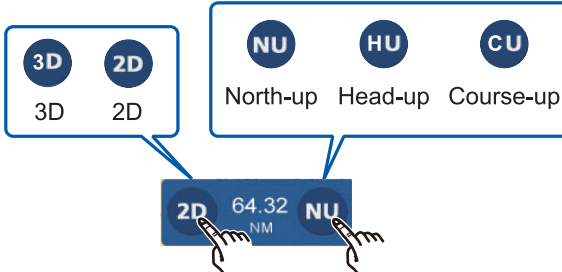


Erstellen von Punkten



Der gespeicherte Punkt wird auf dem Bildschirm angezeigt.

Ändern der Displayorientierung

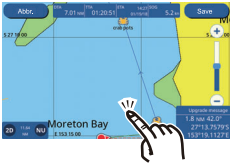


Erstellen von Schnellrouten



Der gespeicherte Punkt wird zum Schnellroutenziel.

Erstellen von geplanten Routen



Wiederholen



Tippen Sie auf die Position des nächsten Wegpunktes.

Tippen Sie nach der Eingabe des letzten Wegpunktes auf „Route speichern“.

Radar

Standby/Übertragung



TX : Übertragung

TX : Im Standby-Modus

Fischfinder

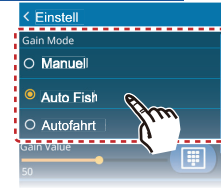
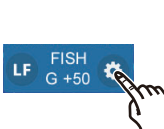
Auswahl der Frequenz



HF : Hochfrequ.

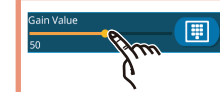
LF : Niedrigfrequ.

Auswahl des Verstärkungsmodus



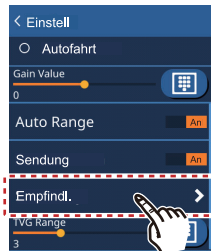
Automatische Modi: Tippen Sie auf [Auto Fischen] oder [Auto Marschfahrt].

Manuelle Modi: Tippen Sie auf [Manuell].



Ziehen Sie im manuellen Modus das Schieberegler-Symbol (Kreis).

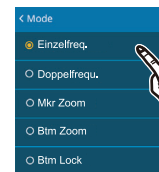
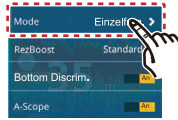
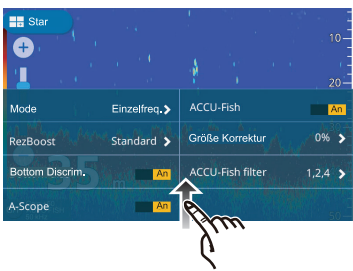
Echoeinstellungen



Reduzieren von Interferenzen

Entfernen schwacher Echos

Auswahl des Anzeigemodus



- Einzelfrequenz-Display
- Doppelfrequenz-Display
- Marker-Zoom
- Bottom-Zoom
- Bottom-Lock

Instrumente

Auswahl der Instrumente



Wiederholen
(bis zu 7 Seiten verfügbar)

Descrizione del funzionamento

Tasto accensione/luminosità e slot microSD card

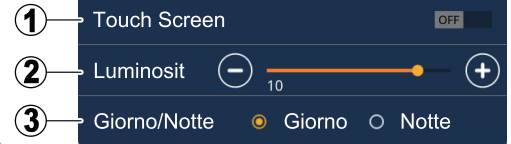
Rimuovere la protezione tirandola dal basso:

Slot microSD card (q.tà 2)
Nota: Inserire la SD card con l'angolo verso il basso.

Pulsante spegnimento forzato

Tasto accensione/luminosità

- Pressione prolungata: Accende/spigne l'unità. Mostra finestra pop-up per regolazione luminosità.
- Pressione breve: Regola la luminosità.



Finestra pop-up per regolazione luminosità

- 1 Blocca schermo touch.
- 2 Consente di regolare la luminosità dello schermo.
- 3 Modifica l'impostazione dei colori.

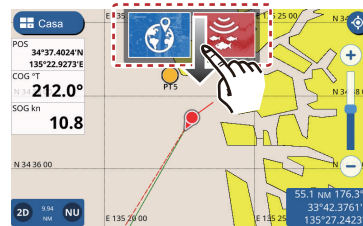
Come selezionare la pagina visualizzata

Metodo 1: Da schermata principale



Schermata principale

Metodo 2: Da pagina elenco rapido

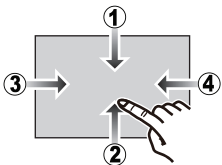


Pagina elenco rapido*



*: Pagine spuntate con puntina (☞) dalla schermata principale.

Funzioni edge-swipe



- 1 Dall'alto in basso: Mostra pagina elenco rapido.
- 2 Dal basso in alto: Mostra menu strati.
- 3 Da sinistra verso destra: Mostra le caselle dati.
- 4 Da destra verso sinistra: Mostra menu a scorrimento.

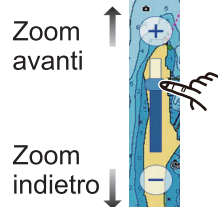
Plotter grafico

Zoom avanti/Zoom indietro

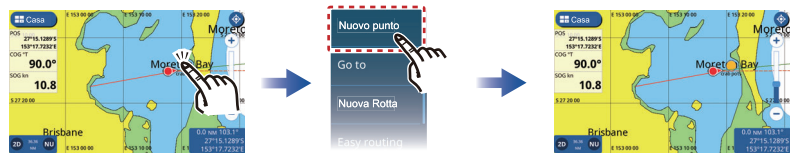
Metodo 1: Stringi/allarga schermo (pinch)



Metodo 2: Barra di scorrimento

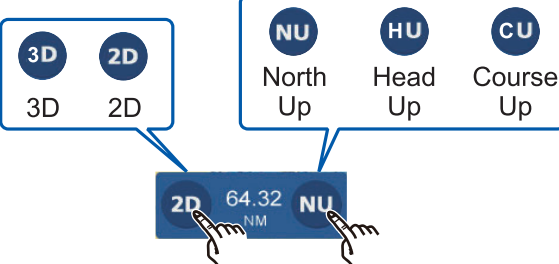


Creazione punti



Il punto salvato appare sullo schermo.

Modifica orientamento display

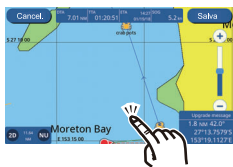


Creazione rapida della rotta



Il punto salvato diventa la destinazione della rotta impostata.

Creazione di una rotta



Tocca la posizione del punto successivo.

Ripeti



Tocca Salva il percorso previa immissione del punto finale.

Radar

Standby/trasmmissione



TX : Trasmmissione
TX : In standby

Ecoscandaglio

Selezione frequenza

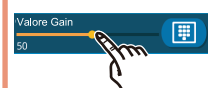


HF : Alta freq.
LF : Bassa freq.

Selezione modalità guadagno

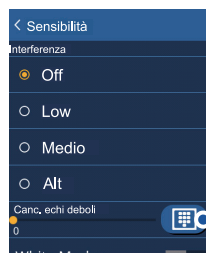
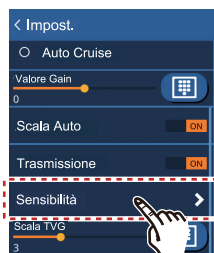


Modalità auto: Tocca [Auto Pesca] o [Auto Crociera].
Modalità manuale: Tocca [Manuale].



Per modalità manuale trascina l'icona regolo (cerchio).

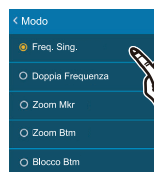
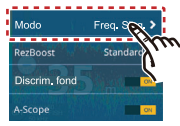
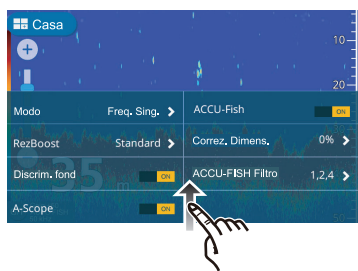
Regolazioni eco



--- Riduci l'interferenza

--- Rimuovi eco deboli

Selezione modalità display



- Singola frequenza
- Doppia frequenza
- Marker Zoom
- Zoom fondale
- Blocco fondale

Stumenti

Selezione strumento



Ripeti
(disponibilità 7 pagine max.)

Modelo GP-1871F/GP-1971F

Português

Manual do operador

A finalidade deste manual é apresentar os procedimentos básicos de operação deste equipamento. Para informação mais detalhada, consulte o Manual do Operador e o Manual de Instalação.
Todas as marcas e nomes de produtos são marcas comerciais, marcas comerciais registradas ou marcas de serviço de seus respectivos proprietários.

Descrição geral do funcionamento

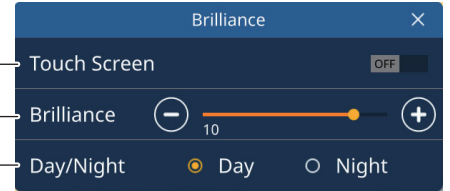
Tecla de alimentação/brilho e ranhuras para cartões microSD

Remova a cobertura da parte inferior para ver:

Nota sobre ranhuras para cartões microSD (2 unidades): Insira os cartões em ângulo em direção à parte traseira da unidade.
O botão de desligamento forçado

Tecla de alimentação/brilho

- Pressão contínua: Ligar/desligar a alimentação.
- Pressão breve: Mostrar a janela de definições de brilho. Ajustar o brilho.

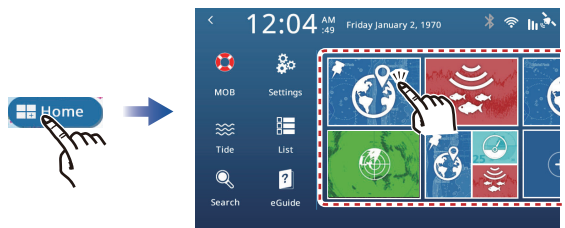


A janela de pop-up de definições de brilho

- 1 Bloqueie o ecrã tátil.
- 2 Ajuste o brilho do ecrã.
- 3 Altere o esquema de cores.

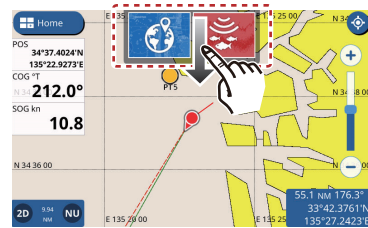
Como seleccionar a página apresentada

Método 1: A partir do ecrã inicial



Ecrã inicial

Método 2: A partir da lista Páginas rápidas

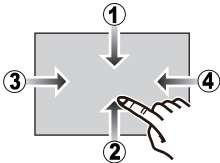


Lista Páginas rápidas*



*: Páginas "afixadas" com a ferramenta de afixação (📌) do ecrã inicial.

Funções de deslizamento a partir da margem



- 1 Da parte superior do ecrã para baixo: É apresentada a lista Páginas rápidas.
- 2 Da parte inferior do ecrã para cima: É apresentado o menu de camadas.
- 3 Da parte esquerda do ecrã para a direita: São apresentadas as caixas de dados.
- 4 Da parte direita do ecrã para a esquerda: É apresentado o menu deslizante.

Traçador de cartas náuticas

Ampliar/Reduzir

Método 1: Toque no ecrã



Ampliar



Reduzir

Método 2:

Barra deslizante

Ampliar ↑



Reduzir ↓

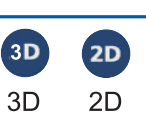


Criação de ponto



O ponto guardado é apresentado no ecrã.

Alterar a orientação do visor

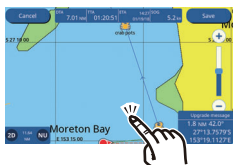


Criação de rota rápida



O ponto guardado torna-se o destino de Rota rápida.

Criação de rota planeada



Repetir



Toque na localização do próximo ponto de referência.

Toque em Guardar rota após entrar no último ponto de referência.

Radar

Aguardar/Transmitir



TX : A transmitir
TX : Em espera

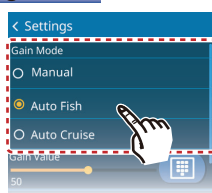
Ecossonda

Seleção de frequência



HF : Alta freq.
LF : Baixa freq.

Seleção do modo de ganho

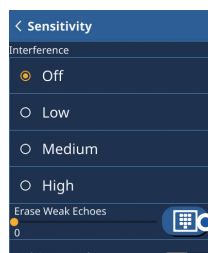
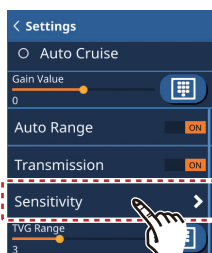


Modos automáticos: Toque em [Pesca automática] ou [Cruzeiro automático].
Modo manual: Toque em [Manual].



No modo manual, arraste o ícone de controlo deslizante (círculo):

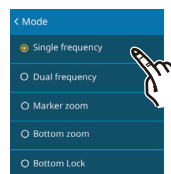
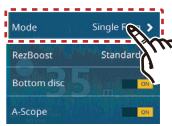
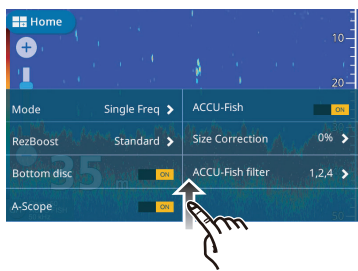
Ajustes de eco



Reduzir interferência

Remover ecos fracos

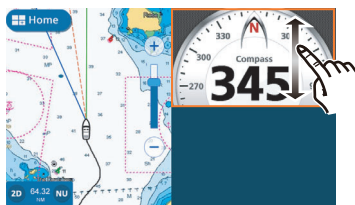
Seleção do modo de visualização



- Frequência única
- Frequência dupla
- Zoom do marcador
- Zoom do fundo
- Fundo travado

Instrumentos

Seleção de instrumentos



Repetir
(Até 7 páginas disponíveis)

Μοντέλο GP-1871F/GP-1971F

Οδηγός Χρήστη

Ελληνικά

Σκοπός αυτού του οδηγού είναι να προσφέρει τις βασικές γνώσεις για τη λειτουργία αυτού του εξοπλισμού. Για περισσότερες λεπτομέρειες, ανατρέξτε στις Οδηγίες Χρήστη.
Όλες οι εμπορικές επωνυμίες και τα ονόματα προϊόντων είναι εμπορικά σήματα, σημεία κατατεθέντα ή σημεία υπηρέσιων των αντίστοιχων κατόχων τους.

Επισκόπηση λειτουργίας

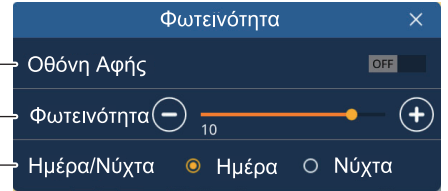
Πλήκτρο Power/Brilliance και υποδοχές κάρτας microSD

Αφαιρέστε το κάλυμμα από κάτω για να δείτε τα εξής:

- Υποδοχές κάρτας microSD (2 θέσεις)
- Σημείωση: Εισάγετε τις κάρτες υπό γωνία προς το πίσω μέρος της συσκευής.
- Κουμπί αναγκαστικού τερματισμού λειτουργίας

Πλήκτρο Power/Brilliance

- Παρατεταμένο πάτημα: Ενεργοποιεί/απενεργοποιεί τη συσκευή.
- Σύντομο πάτημα: Εμφανίζεται το αναδυόμενο παράθυρο ρυθμίσεων φωτεινότητας. Ρυθμίστε τη φωτεινότητα.



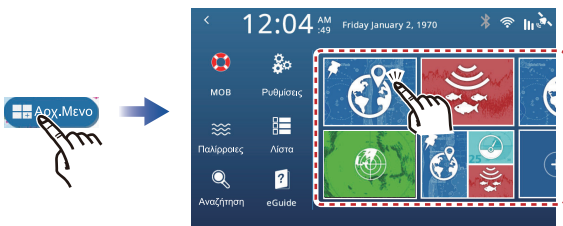
- 1 Οθόνη Αφής
- 2 Φωτεινότητα
- 3 Ημέρα/Νύχτα

Αναδυόμενο παράθυρο ρυθμίσεων φωτεινότητας

- 1 Κλειδώστε την οθόνη αφής.
- 2 Ρυθμίστε τη φωτεινότητα της οθόνης.
- 3 Αλλάξτε τον χρωματικό συνδυασμό.

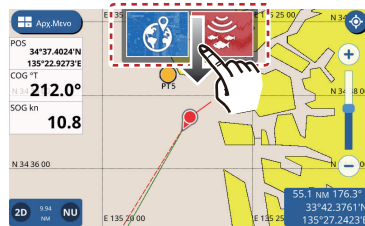
Πώς να επιλέξετε την εμφανιζόμενη σελίδα

Μέθοδος 1: Από την αρχική οθόνη



Αρχική οθόνη

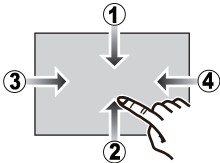
Μέθοδος 2: Από τη λίστα γρήγορων σελίδων



Λίστα γρήγορων σελίδων*

*: Σελίδες «καρφισωμένες» με το εργαλείο καρφισώματος από την αρχική οθόνη.

Λειτουργίες σάρωσης οθόνης



- 1 Επάνω άκρη της οθόνης, προς τα κάτω: Εμφανίζει τη λίστα γρήγορων σελίδων.
- 2 Κάτω άκρη της οθόνης, προς τα επάνω: Εμφανίζει το μενού επιλογών.
- 3 Αριστερή άκρη της οθόνης, προς τα δεξιά: Εμφανίζει τα πλαίσια δεδομένων.
- 4 Δεξιά άκρη της οθόνης, προς τα αριστερά: Εμφανίζει το μενού ενεργειών.

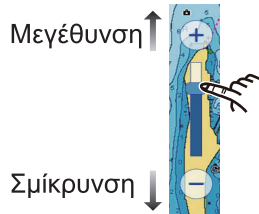
Πλότερ χαρτών

Μεγέθυνση/Σμίκρυνση

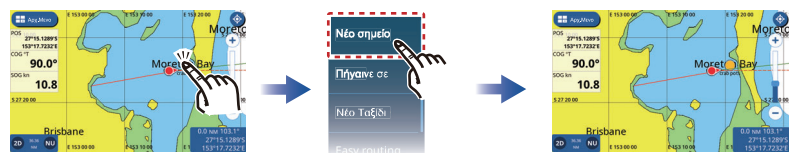
Μέθοδος 1:
Σύγκλιση/απόκλιση
δαχτύλων στην οθόνη



Μέθοδος 2:
Μπάρα κύλισης

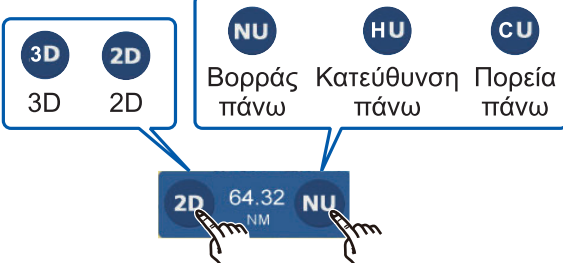


Δημιουργία σημείου

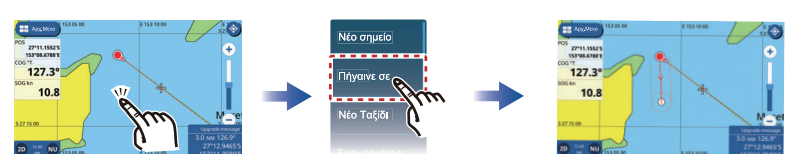


Το αποθηκευμένο σημείο εμφανίζεται στην οθόνη.

Αλλαγή του προσανατολισμού οθόνης

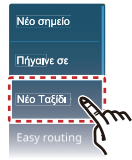
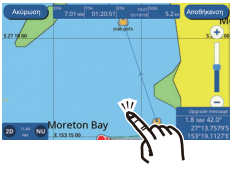


Δημιουργία γρήγορης πορείας



Το αποθηκευμένο σημείο γίνεται προορισμός γρήγορης πορείας.

Δημιουργία σχεδιασμένης πορείας



Αγγίξτε τη θέση του επόμενου σημείου διαδρομής.

Επανάληψη



Αγγίξτε την επιλογή αποθήκευσης διαδρομής μετά την καταχώρηση του τελικού σημείου διαδρομής.

Ραντάρ

Κατάσταση αναμονής/Εκπομπή

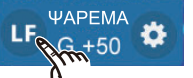


TX : Εκπομπή

TX : Σε κατάσταση αναμονής

Ανιχνευτής Ψαριών

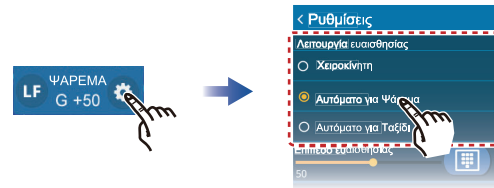
Επιλογή συχνότητας



HF : Υψηλή συχνότη.

LF : Χαμηλή συχνότη.

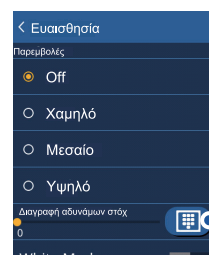
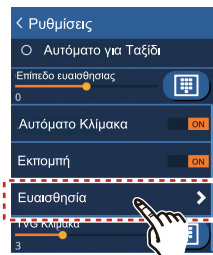
Επιλογή λειτουργίας απολαβής



Αυτόματες λειτουργίες: Αγγίξτε την επιλογή [Auto Fishing] (Αυτόματο Ψάρεμα) ή [Auto Cruise] (Αυτόματη Ταξίδι).
Χειροκίνητη λειτουργία: Αγγίξτε την επιλογή [Manual] (Χειροκίνητα).

Για χειροκίνητη λειτουργία, σύρετε το εικονίδιο της μπάρας (κύκλος).

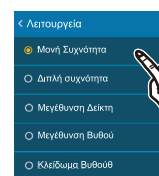
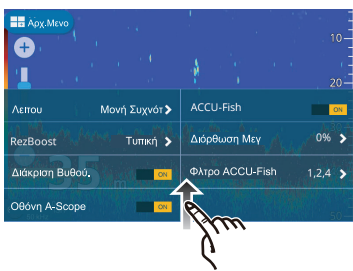
Ρύθμιση ηχούς



Μείωση παρεμβολών

Αφαίρεση αδύναμης ηχούς

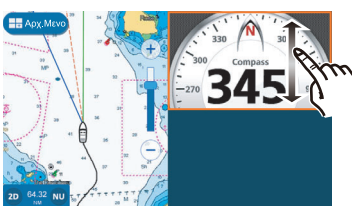
Επιλογή λειτουργίας βυθομέτρου



- Μονή συχνότητα
- Διπλή συχνότητα
- Δείκτης ζουμ
- Ξουμ βυθού
- Κλειδωμα βυθού

Όργανα

Επιλογή οργάνου



Επανάληψη
(Έως 7 σελίδες)

Betjeningsoversigt

Power/lysstyrketast og microSD-kort-åbninger

Fjern gummidæksel for at få vist:

2 stk. microSD kortlæsere
Bemærk: Indsæt kortene vinklet mod enhedens bagside.

Knap for tvungen nedlukning

Power/lysstyrke-tast

- Langvarigt tryk: Tænd/sluk.
- Kortvarigt tryk: Viser pop-up-vinduet med indstillinger for lysstyrke. Justering af lysstyrken.

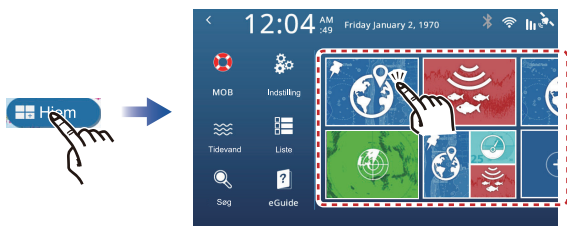


Pop-up-vindue med indstillinger for lysstyrke

- ① Låsning af berøringsskærmen.
- ② Justering af skærmens lysstyrke.
- ③ Skift af farveopsætningen.

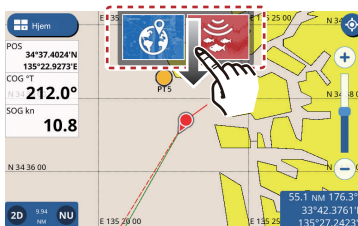
Sådan vælges mellem de enkelte skærm præsentationer

Metode 1: Fra startside



Startside

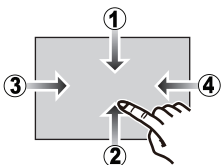
Metode 2: Quick funktionen



Quick funktionen*

*: Sider der er "fastgjort" med fastgørelsesredskabet (📌) fra startside.

Swipe funktioner



- ① Fra skærmens overkant og nedad: Quick funktionen vises.
- ② Fra skærmens underkant og opad: Lag-menuen vises.
- ③ Fra skærmens venstre kant mod højre: Databokse vises.
- ④ Fra skærmens højre kant mod venstre: Skub-ud menuen vises.

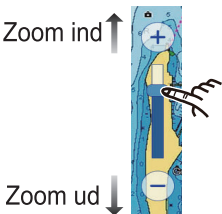
Kortplotter

Zoom ind/Zoom ud

Metode 1: Skærmberøring med fingrene



Metode 2: Skydebjælke



Oprettelse af punkt



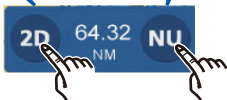
Gemte punkter vises på skærmen.

Oprettelse af hurtigrute

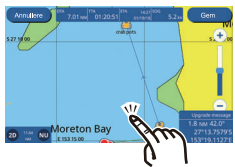


Gemte punkter bliver hurtigrutemål.

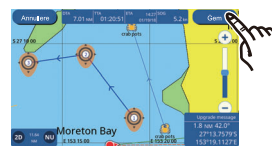
Sådan ændres skærmretningen



Oprettelse af rute



Gentag



Tryk på stedet for det næste waypoint.

Tryk på gem rute, når det sidste waypoint er indtastet.

Radar

Standby/send



TX : Sender

TX : I standby

Ekkolod

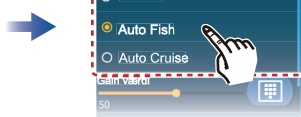
Frekvensvalg



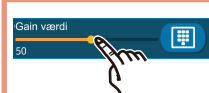
HF : Høj frekvens

LF : Lav frekvens

Valg af forstærknings-tilstand

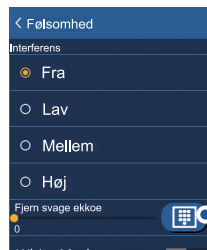
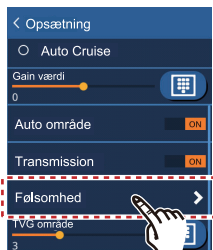


Auto-tilstande: Tryk på [Auto fiskeri] eller [Auto sejlads].
Manuel tilstand: Tryk på [Manuel].



Træk skyder-ikonet (cirkel) for manuel tilstand.

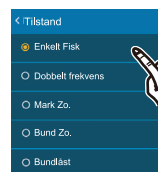
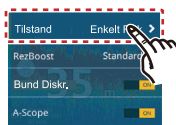
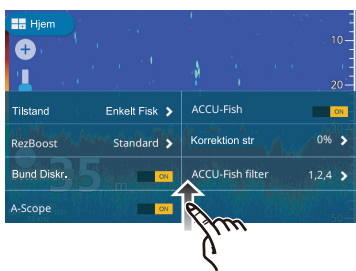
Justering af ekkolod



--- Reducer interferens

--- Fjern svage ekkoe

Valg af display-tilstand



- Enkelt frekvens
- Dobbelt frekvens
- Markør zoom
- Bund zoom
- Bund låst

Instrumenter

Instrumentvalg



Gentag
(op til 7 sider til rådighed)

Funktionsöversikt

Strömförsörjning/Ljusstyrka-knapp och microSD-kort

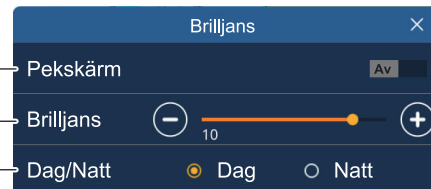
Avlägsna skyddet från botten för att visa:

microSD-kortplatser (2 platser)
obs: Sätt i kort i rätt vinkel mot enhetens baksida.

Tvingad avstängningsknapp

Strömförsörjning/Ljusstyrka-knapp

- Lång tryckning: Slår på/av strömförsörjningen.
- Kort tryckning: Ett fönster för ljusstyrka visas. Justera ljusstyrkan.

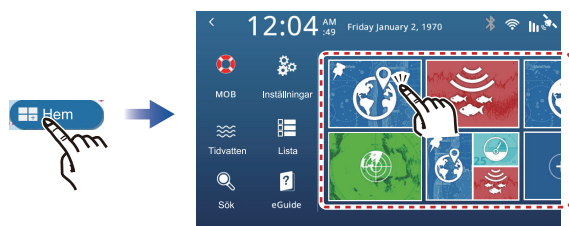


Pop up-fönster för ljusstyrka

- 1 Lås pekskärmen.
- 2 Justera skärmens ljusstyrka.
- 3 Ändra färginställning.

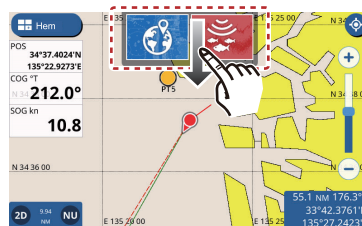
Att välja den visade sidan

Metod 1: Från startsidan



Startsida

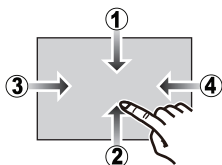
Metod 2: Från snabbsidlistan



Snabbsidlista

*: Sidor som "markerats" med fasthållningsverktyget (👉) från startsidan.

Edge-swipe-funktioner



- 1 Skärmens överkant, nedåt: Visar snabbsidlistan
- 2 Skärmens underkant, uppåt: Visar lagermenyn.
- 3 Skärmens vänstra kant, åt höger: Visar datarutorna.
- 4 Skärmens högra kant, åt vänster: Visar snabbmenyn.

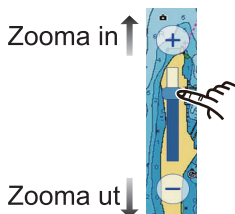
Sjökortsplotter

Zooma in/Zooma ut

Metod 1:
Nyprörelse på skärm



Metod 2: Skjutreglage

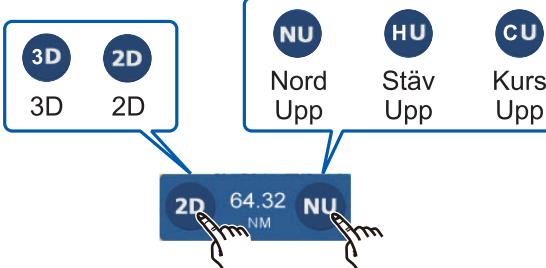


Punktskapande



Sparade punkter visas på skärmen.

Ändra visningsriktning

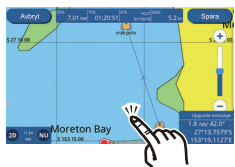


Skapa snabbtrutter



Sparade punkter blir en snabbtrutt-destination.

Skapa planerade rutter



Upprepa



Tryck på plats för nästa waypoint.

Tryck för att spara rutt efter att ha angett slutgiltig waypoint.

Radar

Standby/Sända

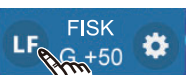


TX : Sänder

TX : I standbyläge

Ekolod

Val av frekvens



HF : Hög frek.

LF : Låg frek.

Val av gain

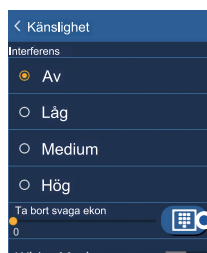
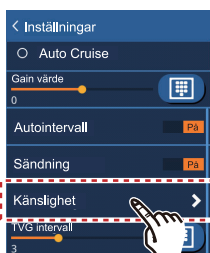


Autolägen: Tryck på [Auto fiske] eller [Auto cruising].
Manuellt läge: Tryck [Manuellt].



Använd skjutreglageikonen (cirkel) för manuellt läge.

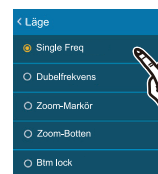
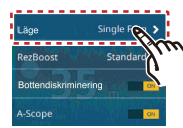
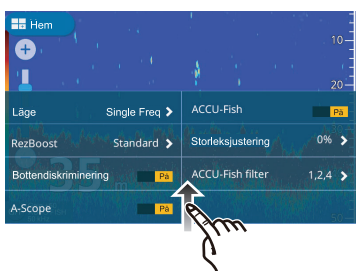
Ekojusteringar



Reducera störningar

Ta bort svaga ekon

Val av visningsläge



- Enkelfrekvens
- Dubelfrekvens
- Markörzoom
- Bottenzoom
- Bottenlåsning

Instrument

Instrumentval



Upprepa
(Upp till 7 sidor tillgängliga)

Driftsoversikt

Strøm/lysstyrke-tast og microSD-kortspor

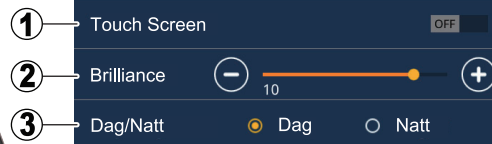
Ta av dekelet fra bunnen for å få tilgang til:

microSD-kortspor (2 steder)
Merk: Sett inn kortet i vinkel mot baksiden av enheten.

Tvungen nedstengning

Strøm/lysstyrke-tast

- Langt trykk: Slå utstyret på/av.
- Kort trykk: Åpner et nytt vindu med innstillinger for lysstyrke. Justere lysstyrken.

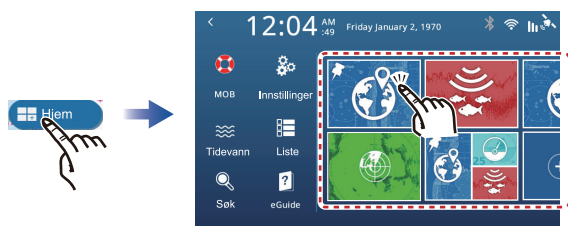


Vindu med innstillinger for lysstyrke

- 1 Låse berøringsskjermen
- 2 Justere lysstyrken på skjermen
- 3 Forandrer fargeoppsettet.

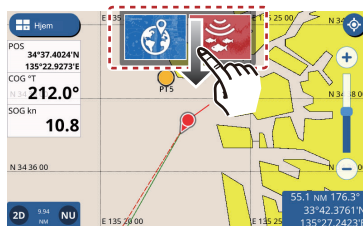
Hvordan velge den viste siden

Metode 1: Fra hjem-skjermen



Hjem-skjerm

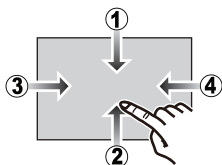
Metode 2: Fra hurtigsidelisten



Hurtigsidelisten*

*: Sider som er festet med festeverktøyet (🔒) fra Hjem-skjermen.

Kantsveipfunksjoner



- 1 Toppen av skjermen, nedover: Viser hurtigsidelisten.
- 2 Bunnen av skjermen, oppover: Viser lagmenyen.
- 3 Venstre side av skjermen, til høyre: Viser databoksene.
- 4 Høyre side av skjermen, til venstre: Viser utglidningsmenyen.

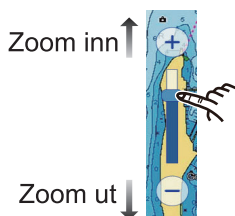
Kartplotter

Zoom inn/Zoom ut

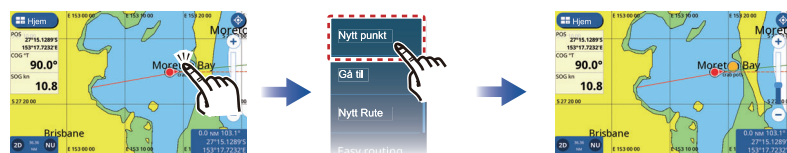
Metode 1: Tommel/pekefinger på skjermen



Metode 2: Glidelinje

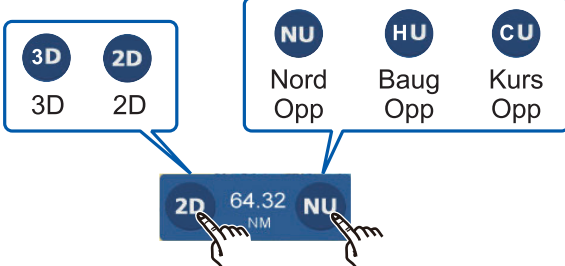


Registrering av punkt

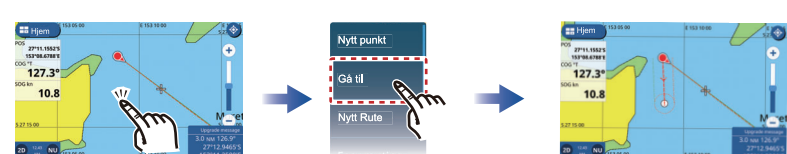


Lagret rutepunkt vises på skjermen.

Endrer visningsretning

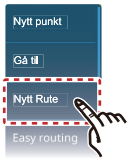
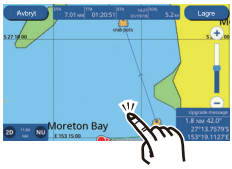


Hurtigoppsett av rute

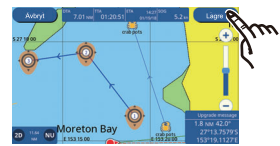


Lagret rutepunkt blir hurtigrutemål.

Oppretting av planlagt rute



Gjenta



Trykk på plasseringen for neste rutepunkt.

Trykk på Lagre rute etter å lagt inn det endelige rutepunktet.

Radar

Standby/sende



TX : Sender

TX : I standby

Ekkolodd

Frekvensvalg



HF : Høy frekv.

LF : Lav frekv.

Valg av forsterkningsmodus.

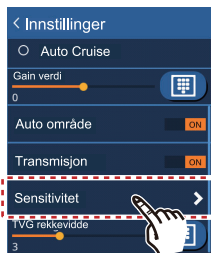


Auto-modi: Trykk på [Auto Fishing] eller [Auto Cruise].
Manuell modus: Trykk på [Manual].



For manuell modus drar du glidebryteren (sirkel).

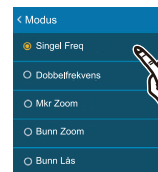
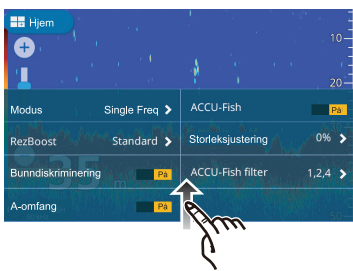
Justering av ekkosignal



Redusere forstyrrelser

Fjerne svake ekkoer

Valg av visningsmodus



- Enkeltfrekvens
- Dobbelfrekvens
- Markør-zoom
- Bunn-zoom
- Bunn låst

Instrumenter

Instrumentvalg



Gjenta
(Opptil 7 sider tilgjengelig)

Tässä oppaassa kuvataan laitteen peruskäyttö. Tarkemmat tiedot löytyvät käyttöohjeesta ja asennusohjeesta.

Kaikki merkki- ja tuotenimet ovat omistajiensa tavaramerkkejä, rekisteröityjä tavaramerkkejä tai palvelumerkkeitä.

Toimintojen yleiskuvas

Power/Brilliance-näppäin ja microSD-korttipaikat

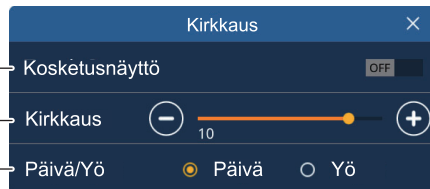
Irrota kuori pohjasta, jolloin näkyviin tulee:

microSD-korttipaikat (2 paikkaa)
Huomaa: Aseta kortit kulmassa laitteen takaosaa kohti.

Pakotetun sammutuksen painike

Power/Brilliance-näppäin

- Pitkä painallus: Kytke virta päälle/pois.
- Lyhyt painallus: Näytä kirkkausasetusten ponnahdusikkuna. Säädä kirkkaus.



Kirkkausasetusten ponnahdusikkuna

- 1 Lukitse kosketusnäyttö.
- 2 Säädä näytön kirkkautta.
- 3 Muuta väriteemaa.

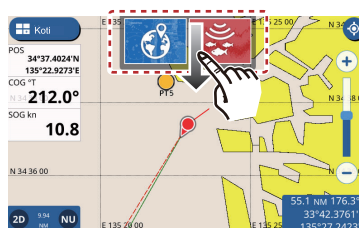
Näytettävän sivun valitseminen

1. tapa: Aloitusnäytöstä



Aloitusnäyttö

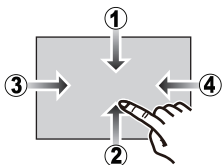
2. tapa: Pikasivuluettelosta



Pikasivuluettelo*

*: Sivut, jotka on "kiinnitetty" kiinnitystyökalulla (📌) Aloitusnäytöstä.

Reuna-pyyhkäisytoiminnot



- | | |
|-----------------------------------|----------------------------|
| ① Näytön yläreuna, alaspäin: | Näyttää Pikasivuluettelon. |
| ② Näytön alareuna, ylöspäin: | Näyttää tasovalikon. |
| ③ Näytön vasen laita, oikealle: | Näyttää tietoruudut. |
| ④ Näytön oikea laita, vasemmalle: | Näyttää liukuvalikon. |

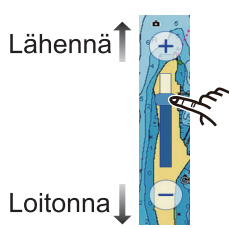
Karttaplotteri

Lähennä/Loitonna

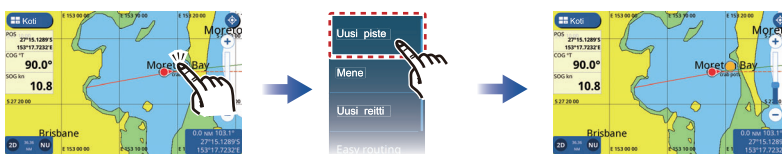
1. tapa: Näytön nipistäminen



2. tapa: Liukupalkki

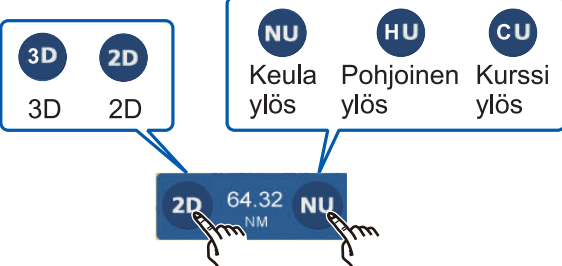


Pisteen luominen

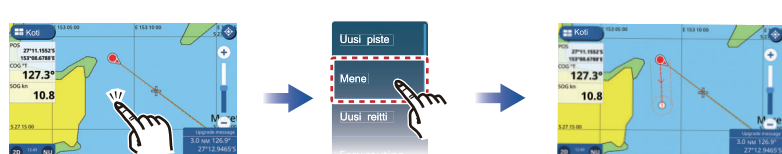


Tallennettu piste tulee näyttöön.

Näyttötavan vaihtaminen

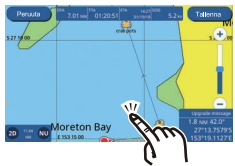


Pikareitin luominen



Tallennetusta pisteestä tulee Pikareitin määränpää.

Suunnitellun reitin luominen



Napauta seuraavan reittipisteen sijaintia.

Toista



Napauta Tallenna reitti asetettuasi viimeisen reittipisteen.

Tutka

Valmiustila/Lähetys

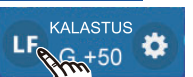


TX : Lähetys

TX : Valmiustilassa

Kaikuluotain

Taajuuden valinta



HF : Korkea taaj.

LF : Matala taaj.

Vahvistustilan valinta

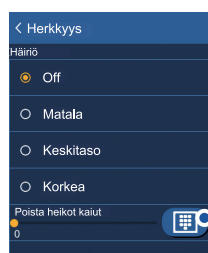
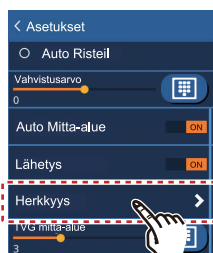


Auto-tilat: Napauta [Auto Fishing] tai [Auto Cruise].
Manuaalinen tila: Napauta [Manual].



Ota manuaalinen tila käyttöön vetämällä liukuvalitsinkuvaketta (ympyrä).

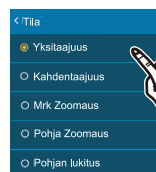
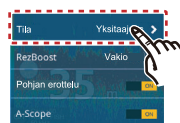
Kaiun säädöt



--- Pienennä häiriötä

--- Poista heikot kaiut

Näyttötilan valinta



- Yhden taajuuden
- Kahden taajuuden
- Valitun alueen zoomausnäyttö
- Pohjan zoomausnäyttö
- Pohjalukitusnäyttö

Mittarinäytöt

Mittarin valinta



Toista
(Korkeintaan 7 sivua käytettävissä)

MEMO



Pub. No. MLG-44980-A
(1805, TASU) GP-1871F/1971F
Printed in Japan



00019517610