

# Navigation Lights

## Series 50

Classic model made of stainless steel



### Application

Application depending on required visibilities and vessel size.  
See table in chapter Information.

### Housing

Stainless steel, impact and shock resistant, non-corrosive,  
non-magnetic, seawater resistant

### Optics

Lens: fresnel, range of visibility 2 nm (Masthead 3 or 5 nm)  
Material: plastic, impact resistant and shockproof, seawater resistant,  
UV protected

### Protection degree

IP56

### Side-mount

Starboard / Port / Bicolor / Masthead / Stern

### Mounting

Side-mount, deck-mount and hoistable mount. Different bracket  
variants for side-mount are available.

For more information see drawing on page 51.

### Electric

Pre-wired with 1.5 m special connection cable, 2 x 1.5 mm<sup>2</sup>,  
self-protective insulation acc. to class II

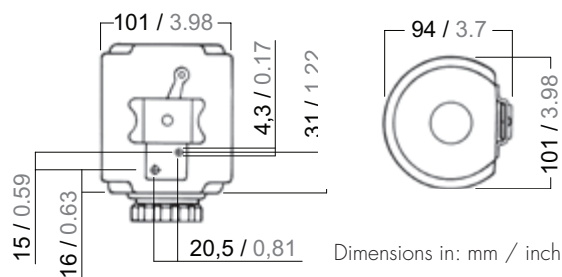
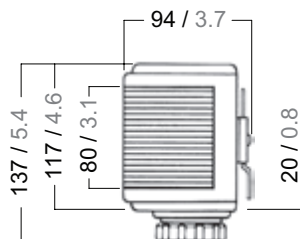
### Light source

Bulb included

### Remark

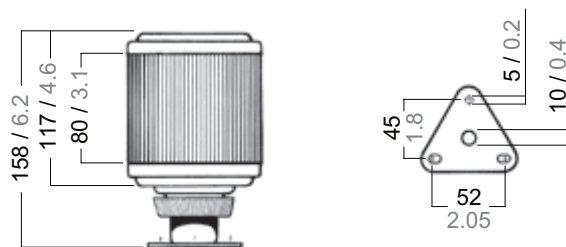
Certification Applicability

Aqua Signal navigation lights are certified as a complete assembly  
including the original equipment bulb. Use only certified OEM  
replacement bulbs to maintain ongoing certification.



	Description	Vessel size	Wattage	Visibility	Mounting	Housing colour	Art. no. 12 V	Art. no. 24 V
	Starboard	< 50 m / < 164 ft.	25 W	2 nm	Side-mount	Stainless steel	3036102000	3036103000
	Port	< 50 m / < 164 ft.	25 W	2 nm	Side-mount	Stainless steel	3035202000	3035203000
	Bicolor	< 20 m / < 65 ft.	25 W	2 nm	Side-mount	Stainless steel	3033302000	3033303000
	Masthead	< 20 m / < 65 ft.	25 W	3 nm	Side-mount	Stainless steel	3030002000	3030003000
	Masthead white stark	< 50 m / < 164 ft.	25 W	5 nm	Side-mount	Stainless steel	3087002000	3087003000
	Stern	< 20 m / < 65 ft.	10 W	2 nm	Side-mount	Stainless steel	3034002000	3034003000
	Stern yellow	< 20 m / < 65 ft.	10 W	2 nm	Side-mount	Stainless steel	3091402000	3091403000

## Deck-mount All-round



Dimensions in: mm / inch

	Description	Vessel size	Wattage	Visibility	Mounting	Housing colour	Art. no. 12 V	Art. no. 24 V
<b>360°</b>	All-round white	< 20 m / < 65 ft.	10 W	2 nm	Deck-mount	Stainless steel	3037012000	3037013000
<b>360°</b>	All-round white ordinary	< 20 m / < 65 ft.	10 W	2 nm	Deck-mount	Stainless steel	3086012000	3086013000
<b>360°</b>	All-round white hell	< 20 m / < 65 ft.	25 W	2 nm	Deck-mount	Stainless steel	3083012000	3083013000
<b>360°</b>	All-round red	< 20 m / < 65 ft.	25 W	2 nm	Deck-mount	Stainless steel	3038212000	3038213000
<b>360°</b>	All-round green	< 20 m / < 65 ft.	25 W	2 nm	Deck-mount	Stainless steel	3039112000	3039113000
<b>360°</b>	All-round yellow	< 20 m / < 65 ft.	25 W	2 nm	Deck-mount	Stainless steel	3058412000	3058413000

## Side-mount Bicolor



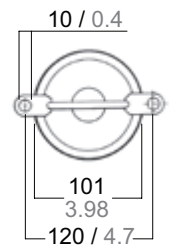
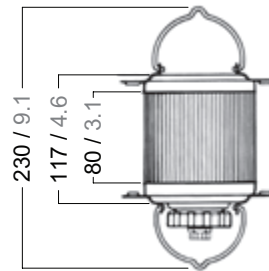
## Side-mount Stern



# Navigation Lights

## Series 50

Hoistable  
All-round



Dimensions in: mm / inch

	Description	Vessel size	Wattage	Visibility	Mounting	Housing colour	Art. no. 12 V	Art. no. 24 V
<b>360°</b>	All-round white	< 20 m / < 65 ft.	10 W	2 nm	Hoistable	Stainless steel	3037002000	3037003000
<b>360°</b>	All-round white ordinary	< 20 m / < 65 ft.	10 W	2 nm	Hoistable	Stainless steel	3086002000	3086003000
<b>360°</b>	All-round white hell	< 20 m / < 65 ft.	25 W	2 nm	Hoistable	Stainless steel	3083002000	3083003000
<b>360°</b>	All-round red	< 20 m / < 65 ft.	25 W	2 nm	Hoistable	Stainless steel	3038202000	3038203000
<b>360°</b>	All-round green	< 20 m / < 65 ft.	25 W	2 nm	Hoistable	Stainless steel	3039102000	3039103000
<b>360°</b>	All-round yellow	< 20 m / < 65 ft.	25 W	2 nm	Hoistable	Stainless steel	3058402000	3058403000
<b>360°</b>	All-round blue	< 20 m / < 65 ft.	25 W	2 nm	Hoistable	Stainless steel	3085502000	3085503000

Spare parts / Extras

- 83037010 white / weiß / blanc
- 83086002 ordinary / gewöhnlich / ordinaire
- 83038002
- 83039002

- 83037011 white / weiß / blanc
- 83086001 ordinary / gewöhnl. / ordinaire
- 83038001
- 83039001
- 83058001

- 90400002 12V/25W
- 90400003 24V/25W
- 90400005 12V/10W
- 90400006 24V/10W

83037009

95800099

- 83037002
- 83507003 with cable clamp / mit Kabelklemme / avec borne de câble / met kabelklem / con morsetto per cavi / con borne de cable / com borne para o cabo

83030006

95800099

- 83035002
- 83036002
- 83033002
- 83030003 3 n.m.
- 83087001 5 n.m.
- 83034002

63030009

\*63030012 ↓ 160 mm / 6.3" (S)

\*39080010 ↓ 160 mm / 6.3" (S)

\*63030011 ↓ 195 mm / 7.7" (S)

\*3902001 (S)

\*83501004 (S)

