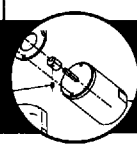
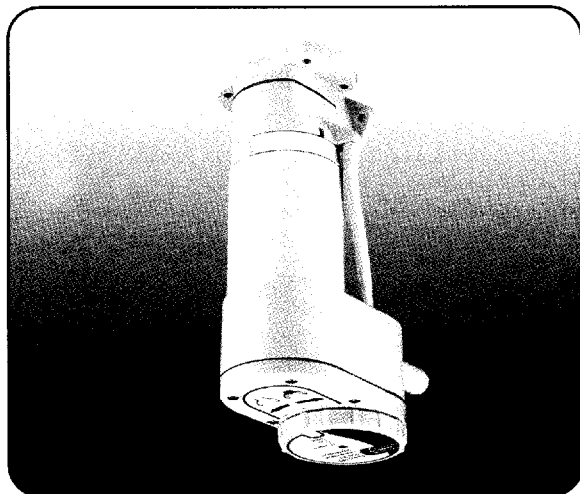
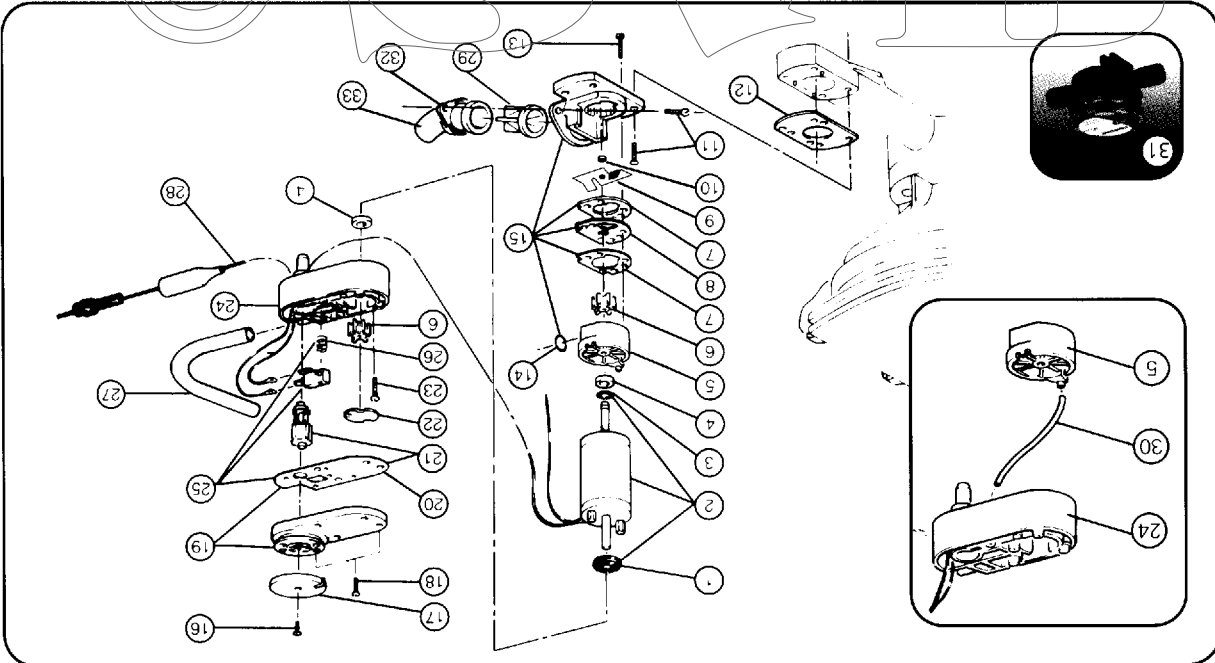


Service Parts - Electric Conversion for Manual Toilets

10



29200 Series Electric Conversion for Manual Toilets



Kit	Part No	Description
A	29101-0000	SERVICE KIT
B	29109-0000	HARDWARE KIT
C	29116-1000	WASTE & FLUSH PUMP BODIES

Key	Description	Qty per Con- version	Part No	Qty per Repair Kit
1	SLINGER (LARGE)	1	29108-0120	A
2	MOTOR ASSEMBLY 2V	1	29108-0240	B
3	SLINGER (SMALL)	1		C
4	SEAL	2		
5	WASTE PUMP BODY	1		
6	IMPELLER	2		
7	GASKET (PAPER)	2		
8	WEARPLATE (STAINLESS STEEL)	1		
9	CHOPPER PLATE	1	37056-1000	
10	LOCK NUT	1		
11	MOUNTING SCREW (PAR)	1		
12	BASE GASKET (RUBBER)	1	29072-1000	
13	SCREW (WASTE PUMP)	4		
14	O-RING	1		
15	MACERATOR HOUSING	1	29071-1000	
16	SCREW (CONTROL KNOB)	1		
17	CONTROL KNOB	1	29077-1000	
18	SCREW (FLUSH PUMP COVER)	7		
19	FLUSH PUMP COVER ASSY	1	29081-1000	
20	FLUSH PUMP GASKET (CORK)	1	29075-1000	
21	CONTROL VALVE ASSY	1	29083-1000	
22	WEARPLATE (BRASS)	1		
23	SCREW (FLUSH PUMP)	2		
24	FLUSH PUMP BODY	1		
25	SWITCH ASSY	1	29103-1000	
26	SWITCH SPRING	1		
27	HOSE (ALL TOILETS)	1	29035-1000	
28	CABLE ASSY (WITHOUT FUSE)	1	29106-1000	
29	JOKER VALVE	1	29092-0000	
30	BLEED HOSE	1	29019-1010	
31	PUMP GARD™	1	46200-0000	
32	DISCHARGE FLANGE	1	29091-1000	
33	DISCHARGE ELBOW	1	29029-1000	

JABSCO